

BIOETHICS AND HUMANITIES NEWSLETTER



PROGRAM IN BIOETHICS AND HUMANITIES

December 2015

Welcome to the monthly Bioethics and Humanities Newsletter provided by the Program in Bioethics and Humanities at the University of Iowa Carver College of Medicine.

Program in Bioethics and Humanities: *Our Mission*

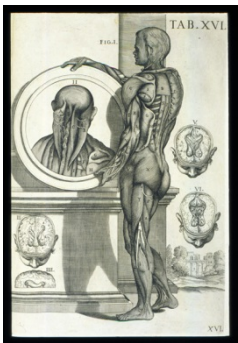
We are committed to helping healthcare professionals explore and understand the increasingly complex ethical questions that have been brought on by advances in medical technology and the health care system. We achieve this through education, research, and service within the Carver College of Medicine, University of Iowa Health Care, University of Iowa, and the wider Iowa community.

[More Details About The Program](#)



Program Highlight

[Robert D. Sparks Writing Contest](#)



The purpose of this contest is to examine the influences of history, ethics, culture, literature, philosophy, sociology, or related frameworks on medicine, the practice of medicine, and the human condition.

Two \$1,200 awards will be given to the best submissions that examine a significant issue in medicine using ethical, historical, or cultural perspectives. This competition is open to all medical students and physician assistant students enrolled in the UI Carver College of Medicine.

Deadline for entry: March 22, 2016
Length: 2500-5000 words

For more information, please click [here](#).

Upcoming Events

Schwartz Rounds

Dec. 8, noon-1:00pm, East Room
Lunch is provided to the first 120 attendees. Bring a beverage with you.

Topic: *Coming Up for Air:* Improving Patient Care through Compassionate Self-awareness

This UIHC forum for discussion will allow participants to share stories about taking care of oneself as a provider, exploring resiliency and debriefing. Participants are encouraged to bring a story to share.

For a listing of more upcoming events related to bioethics and humanities, please click [here](#).

Publication Highlight

[Computer Use in Primary Care and Patient-Physician Communication](#)

Dilermando Sobral, **Marcy Rosenbaum**, Margarida Figueiredo-Braga

OBJECTIVES: This study evaluated how physicians and patients perceive the impact of computer use on clinical communication, and how a patient-centered orientation can influence this impact. **METHODS:** The study followed a descriptive cross-sectional design and included 106 family physicians and 392 patients. An original questionnaire assessed computer use, participants' perspective of its impact, and patient centered strategies. **RESULTS:** Physicians reported spending 42% of consultation time in contact with the computer. A negative impact of computer in patient-physician communication regarding the consultation length, confidentiality, maintaining eye contact, active listening to the patient, and ability to understand the patient was reported by physicians, while patients reported a positive effect for all the items. Physicians considered that the usual computer placement in their consultation room was significantly unfavorable to patient-physician communication. **CONCLUSIONS:** Physicians perceive the impact of computer use on patient-physician communication as negative, while patients have a positive perception of computer use on patient-physician communication. **PRACTICAL IMPLICATIONS:** Consultation support can represent a challenge to physicians who recognize its negative impact in patient centered orientation. Medical education programs aiming to enhance specific communication skills and to better integrate computer use in primary care settings are needed.

Reading Ethics at UIHC

If you are interested to see what the UIHC Ethics Subcommittee was reading in November, please click [here](#).

Quotation of the Month

Ethical engagement is humanizing...because it involves the mutual flow of empathy and respectful regard for differences that lets values emerge in an exchange....

Larry R. Churchill, in *Ethical Dimensions of Health Policy*, 2002 (p. 55)

Bioethics in the Literature

- Beskow LM, O'Rourke PP. Return of genetic research results to participants and families: IRB perspectives and roles. [J Law Med Ethics](#). 2015 Sep; 43: 502-513.
- Courtwright A, Rubin E. Who should decide for the unrepresented? [Bioethics](#). 2015 Aug 26. [Epub ahead of print]
- Dean A, Beard B. Is sedation at the end of life compatible with the principles of palliative care? [End of Life Journal](#). 2015; 5: e000001.
- Emanuel EJ. Reform of clinical research regulations, finally. [N Engl J Med](#). 2015 Nov 4. [Epub ahead of print]
- Miles SH. Kaci Hickox: Public health and the politics of fear. [Am J Bioeth](#). 2015; 15: 17-19.
- Roduit JA, Heilinger JC, Baumann H. Ideas of perfection and the ethics of human enhancement. [Bioethics](#). 2015 Nov; 29: 622-630.
- Vandoolaeghe S, Blaizot A, Boudiguet D, et al. A charter for biomedical research ethics in a progressive, caring society. [Philos Ethics Humanit Med](#). 2015; 10: 12.
- Williams AR. Opportunities in reform: Bioethics and mental health ethics. [Bioethics](#). 2015 Sep 30. [Epub ahead of print]

UIHC Ethics Consult Service

This service is a resource for patients, family members, or health professionals at UIHC who would like help addressing an ethical question or problem related to a patient's care. Consults can be ordered by UIHC clinicians through EPIC. Consults can also be requested by calling (319) 356-1616 and asking for the ethics consultant on call. For more information, please click [here](#).

Summer Ethics Fellowship for Medical Students



Fellowships at Auschwitz for the Study of Professional Ethics (FASPE) is **now accepting applications for its 2016 medical program. FASPE Medical** uses the conduct of doctors and other medical professionals during the Holocaust and in Nazi Germany as a launching point for an intensive course of study on contemporary medical ethics. FASPE is predicated upon the power of place. Fellows visit Auschwitz and other sites in Germany and Poland where they consider how to apply the lessons of history to the ethical challenges of medicine today.

Ten to fifteen Fellows will be chosen for the 2016 program, which **will run from Friday, June 17 through Thursday, June 30**. All program costs, including travel to Europe from New York and back, European travel, lodging, and food, are covered. FASPE Medical is part of a program offering fellowships in several professional fields. Medical Fellows travel and share some seminars with Seminary Fellows.

Completed **applications are due by December 22, 2015**. To apply or to learn more about FASPE, please visit: www.FASPE.info. For a flyer on FASPE Medical, follow this [link](#).

If you have any questions, please contact Thorin R. Tritter, Managing Director of FASPE, at trittr@FASPE.info.

Clinical Research Ethics Consultation Service

We provide free consultation on ethical issues related to research design, tissue banking, genetic research results, informed consent, and working with vulnerable patient populations. In particular, we assist clinical investigators in identifying and addressing the ethical challenges that frequently arise when designing or conducting research with human subjects. These include ethical challenges in sampling design; randomized and placebo-controlled studies; participant recruitment and informed consent; return of individual-level research results; community engagement processes; and more. For more information, please click [here](#).

The American Osler Society

[William B. Bean Student Research Award](#)
DEADLINE: March 1, 2016

The American Osler Society announces the availability of an award for support of research in the broad areas of medical history and medical humanities. Candidates must be currently matriculated students in approved schools of medicine in the United States or Canada. The successful applicant may be eligible to present a paper based on his or her findings at the annual meeting of the American Osler Society. The stipend for the coming year will be \$1,500, and up to \$750 additional may be available to support travel to the annual meeting contingent on submission of a paper acceptable to the Committee at the conclusion of the studentship. If you would like more information, please click [here](#).

History of Medicine Society

The University of Iowa History of Medicine Society invites you to read "[Notes from the John Martin Rare Book Room, November 2015](#)."

Summer Undergraduate Program in Biomedical Ethics Research

The Mayo Clinic Biomedical Ethics Program seeks applicants for its 2016 summer student program. This program is supported in part by a generous gift from Jim Vann and Lee Stanton Vann. 4-6 students will be selected for the program. Each student will be placed with a faculty mentor to work on a particular research project for approximately 10 weeks. In addition, students will participate in educational sessions on bioethics research methods and lunch meetings with faculty. Students also may have the opportunity to shadow physicians or clinical ethics consultations.

Interested applicants should apply to job posting **58853BR: Bioethics Intern** on the Mayo Clinic jobs website (<http://www.mayoclinic.org/jobs>) by **Jan. 15, 2016**.

Candidates must attach the following documents to the online application:

1. Cover letter describing your career goals and how biomedical ethics research relates to those goals
2. Resume/CV that includes your major, relevant coursework, honors, and related experiences
3. A 5-10 page writing sample (such as a course paper), preferably on a topic in biomedical ethics
4. Current college transcript
5. Two letters of recommendation from research mentors or undergraduate professors (addressed to Dr. Richard Sharp, Program Director). Letters either can be uploaded by the candidate into the application or emailed directly by the professor/mentor to bioethics@mayo.edu.

Top applicants will be invited to participate in a brief phone interview to discuss specific skills and areas of interest, in order to match the applicant with a mentor and research project. Final decisions will be made based on applicants' interests and availability of appropriate mentors. All students must pass a background check and post-offer placement assessment prior to their start date.

Examples of research topics that might be explored include:

- Ethical issues in life-sustaining treatments and end-of-life care
- Research ethics
- Ethical issues in regenerative medicine and transplantation
- Allocation of health care resources
- Professionalism in medicine and science
- Ethical issues in genomics and individualized medicine
- Science and society
- Research related to clinical ethics consultation - Reproductive ethics and prenatal testing

Students who have already participated in the program are not eligible, but previous applicants are encouraged to reapply.

For further information or specific questions, contact Dr. Jessica Hirsch, Biomedical Ethics Education Coordinator at 507-538-4023 or Hirsch.jessica@mayo.edu

Post-Baccalaureate Program in Biomedical Ethics Research

The Mayo Clinic Biomedical Ethics Program seeks applicants for a one-year post-baccalaureate research experience in empirical bioethics research, as part of the Mayo Clinic Graduate Research Employment Program (GREP). Students will participate in educational activities and conduct bioethics research in a mentored environment. GREP is designed for individuals who have completed a bachelor's degree and plan to attend graduate school or medical school. Eligible candidates must have received their bachelor's degree before the position starts. GREP students are eligible to take graduate-level courses through the Mayo Graduate School. The position is ideal for students interested in a "gap year" between their undergraduate and graduate degree programs. Two post-baccalaureate research fellows will be selected for the 2016-2017 academic year. We anticipate that these research fellows will begin their positions in the summer of 2016. The position may be extended beyond one year at the discretion of the supervisor but will not exceed a total of two years.

Qualifications:

To be eligible, students must have completed their bachelor's degree before the position start date and must be pursuing medical/graduate school admission. Students must be U.S. citizens or permanent residents. All students must pass a background check and post-offer placement assessment prior to their start date. Students must have completed coursework in bioethics or a closely related discipline such as behavioral psychology, ethics/philosophy, medical anthropology/sociology, pre-med, or public health. The successful applicants will be:

- committed to pursuing a career in which they will engage topics in biomedical ethics
- able to work independently
- proficient in written and verbal communication
- competent in identifying relevant peer-reviewed publications on specialized research topics
- highly motivated to learn new research methods

To Apply:

Interested applicants should email the following materials to bioethics@mayo.edu by **March 18, 2016**.

1. Cover letter describing your career goals and how biomedical ethics research relates to those goals
2. Resume/CV that includes your major, relevant coursework, honors, and related experiences
3. A 5-10 page writing sample (such as a course paper), preferably on a topic in biomedical ethics
4. Current college transcript
5. Two letters of recommendation from research mentors or undergraduate teachers (addressed to Dr. Richard Sharp, Program Director). *Letters should be sent directly by the recommender and must be received by the application deadline.*

For more information, contact Dr. Jessica Hirsch, Biomedical Ethics Education Coordinator at 507-538-4023 or Hirsch.jessica@mayo.edu. For all other questions, please contact Dr. Richard R. Sharp, Director of the Biomedical Ethics Research Program at bioethics@mayo.edu.

To unsubscribe from the Bioethics and Humanities monthly Newsletter, please click [here](#).

Laura Shinkunas
Editor, Bioethics and Humanities Newsletter
Program in Bioethics and Humanities
500 Newton Road, 1-110 MEB
(319) 384-4654
laura-shinkunas@uiowa.edu