

READING ETHICS AT UIHC

If you are interested to see what the UIHC Ethics Subcommittee was reading in November, please click on the following links ([article 1](#); [article 2](#)).

CLINICAL RESEARCH ETHICS SERVICE

We provide free consultation on ethical issues related to research design, tissue banking, genetic research results, informed consent, and working with vulnerable patient populations. In particular, we assist clinical investigators in identifying and addressing the ethical challenges that frequently arise when designing or conducting research with human subjects. These include ethical challenges in sampling design; randomized and placebo-controlled studies; participant recruitment and informed consent; return of individual-level research results; community engagement processes; and more. For more information, please [click here](#).

PROGRAM HIGHLIGHT (CONTINUED)

snapshot of the scope of ethical issues seen by the Service. The most common ethical issues were decision-making capacity, surrogate decision-making, refusal of treatment/plan by the patient and/or family, best interests of patients, rights and duties of healthcare professionals, goals of care, conscientious practice and moral distress, patient autonomy, medical futility, informed consent, and advance care planning.

Consults can be ordered by UIHC clinicians through EPIC or by calling 356-1616 and asking for the ethics consultant on call.

For more information about the Service, please [click here](#).

HISTORY OF MEDICINE SOCIETY PRESENTATION

Date: Thursday, January 26, 2017

Time: 5:30-6:30 p.m.

Location: 2117 Medical Education Research Facility (MERF)

The University of Iowa History of Medicine Society invites you to hear:



Russell Currier

Past President

American Veterinary Medical History Society

[Iowa's Richard Edwin Shope MD: His Contributions to Influenza Research and One Medicine/Health](#)

Richard E. Shope MD (1901-1966) was a pioneer microbiologist who investigated a variety of human and animal diseases. Dr. Shope joined the laboratories of the Rockefeller Institute at Princeton to work with Dr. Paul Lewis, the discoverer of polio virus. In 1928, he left tuberculosis research to investigate hog cholera where he observed his first outbreak of swine influenza. Later he isolated the virus from pigs and its co-pathogen "Haemophilus influenzae suis", and postulated that the swine virus was related to the human 1918 pandemic virus.

SUMMER ETHICS FELLOWSHIP FOR MEDICAL STUDENTS

FASPE (Fellowships at Auschwitz for the Study of Professional Ethics) is now accepting applications for its 2017 Medical program.

FASPE Medical is a fully-funded, two-week summer program that uses the conduct of doctors and other medical professionals in Nazi Germany as a launching point and backdrop for an intensive study of contemporary medical ethics. FASPE Medical is predicated upon the power of place. Fellows visit Auschwitz and other sites in Germany and Poland where they consider how to apply the lessons of history to the ethical challenges in medicine today.

In 2017, the program will take place from Monday, June 19 to Friday, June 30. All program costs are covered, including round-trip travel from New York to Europe, European travel, lodging, and food.

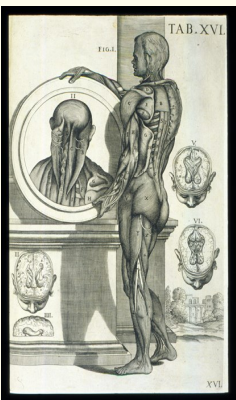
FASPE Medical is open to all current MD and DO students.

To learn more about FASPE and to apply, please visit: www.FASPE.info.

Completed applications are due by Tuesday, December 20, 2016.

If you have any questions, please contact Thorin R. Tritter, Executive Director of FASPE, at ttritter@FASPE.info.

ROBERT D. SPARKS WRITING CONTEST



The purpose of this contest is to examine the influences of history, ethics, culture, literature, philosophy, sociology, or related frameworks on medicine, the practice of medicine, and the human condition.

Two \$1,200 awards will be given to the best submissions that examine a significant issue in medicine using ethical, historical, or cultural perspectives. This competition is open to all medical students and physician assistant students enrolled in the UI Carver College of Medicine.

Submission should be 2500-5000 words in length, double spaced with 1-inch margins in a 12 point font (approximately 12 to 20 pages).

Deadline for entry: March 21, 2017

For more information, please [click here](#).

THE AMERICAN OSLER SOCIETY
WILLIAM B. BEAN STUDENT RESEARCH AWARD

The American Osler Society announces the availability of an award for support of research in the broad areas of medical history and medical humanities. Candidates must be currently matriculated students in approved schools of medicine in the United States or Canada. The successful applicant may be eligible to present a paper based on his or her findings at the annual meeting of the American Osler Society. The stipend for the coming year will be \$1,500, and up to \$750 additional may be available to support travel to the annual meeting contingent on submission of a paper acceptable to the Committee at the conclusion of the studentship.



Deadline for entry: March 1, 2017

For more information, please [click here](#).

BIOETHICS IN THE LITERATURE

- ⇒ Bertier G, Carrot-Zhang J, Ragoussis V, et al. Integrating precision cancer medicine into healthcare-policy, practice, and research challenges. [Genome Med](#). 2016 Oct; 8: 108.
- ⇒ Burns JP, Truog RD. The DNR order after 40 years. [N Engl J Med](#). 2016 Aug; 375: 504-506.
- ⇒ Cohen IG, Lynch HF, Deubert CR. A proposal to address NFL club doctors' conflicts of interest and to promote player trust. [Hastings Cent Rep](#). 2016 Nov; 46 Suppl 2: S2-S24.
- ⇒ Hagens M, Onwuteaka-Philipsen BD, Pasman HRW. Trajectories to seeking demedicalised assistance in suicide: A qualitative in-depth interview study. [J Med Ethics](#). 2016 Nov 30. [Epub ahead of print]
- ⇒ Kumagai AK, Jackson B, Razack S. Cutting close to the bone: Student trauma, free speech, and institutional responsibility in medical education. [Acad Med](#). 2016 Oct 25. [Epub ahead of print]
- ⇒ Mariner WK, Annas GJ. A culture Of health And human rights. [Health Aff \(Millwood\)](#). 2016 Nov; 35: 1999-2004.
- ⇒ Sallans RK. Lessons from a transgender patient for health care professionals. [AMA J Ethics](#). 2016 Nov; 18: 1139-1146.
- ⇒ Savulescu J, Wartolowska K, Carr A. Randomised placebo-controlled trials of surgery: Ethical analysis and guidelines. [J Med Ethics](#). 2016 Dec; 42: 776-783.
- ⇒ Simkulet W. Intention and moral enhancement. [Bioethics](#). 2016 Nov; 30: 714-720.

BIOETHICS IN THE NEWS

- ⇒ [More Gay Couples Using Surrogates in US](#). BioEdge, November 26, 2016.
- ⇒ [Cryonics: Hype, Hope, or Hell?](#) The Conversation, November 22, 2016.
- ⇒ [California Prepares for Assisted Suicide of Patients in Mental Hospitals](#). BioEdge, November 20, 2016.
- ⇒ [1 in 4 Seniors Doesn't Discuss End-of-Life Care](#). HealthDay News, October 31, 2016.

To unsubscribe from the Bioethics and Humanities monthly newsletter, please [click here](#).

Questions or comments? Email the [Newsletter Editor](#).