

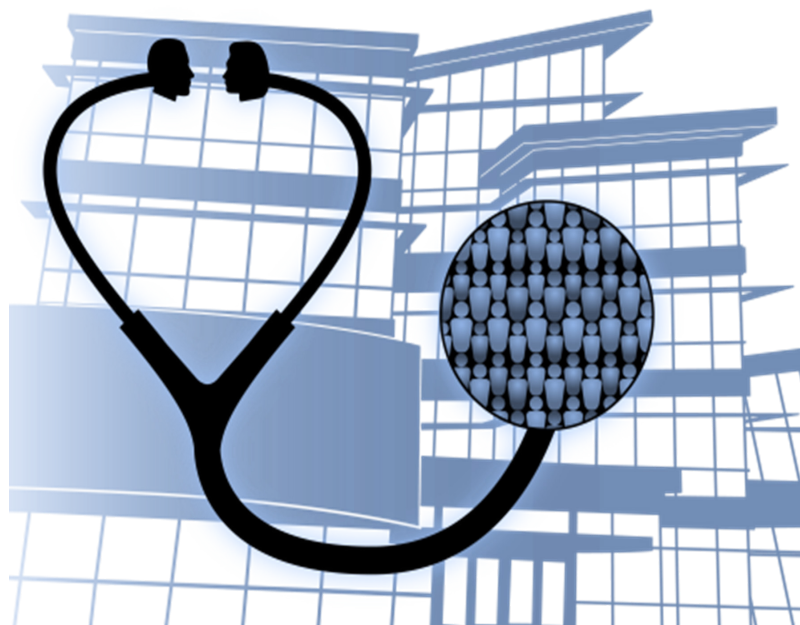
2024

ETHICS IN HEALTHCARE

FRIDAY, MAY 31, 2024

8 AM - 4 PM

Medical Education Research Facility (MERF)
375 Newton Road
Iowa City, Iowa



A one-day conference for learning,
collaborative dialogue, and
inter-professional exchange

SPONSORED BY
Program in Bioethics and Humanities
Roy J. and Lucille A. Carver College of Medicine



GENERAL INFORMATION

OVERVIEW

With the steady introduction of more treatment options and biotechnologies, an increasing number and range of ethical challenges in health care are emerging. This conference is designed to help professionals meet these challenges through their work as clinicians, members of ethics committees or ethics consult teams, and administrators.

This one-day conference for collaborative learning, dialogue, and inter-professional exchange seeks to provide up-to-date information in healthcare ethics relevant to clinical practice; provide approaches to ethical reasoning that clarify ethical problems; and facilitate professional discussion of ethical challenges and decision making in healthcare.

INTENDED AUDIENCE

Administrators, Advance Practice Providers, Attorneys, Chaplains, Nurses, Physicians, Social Workers, Students, Trainees, and Others

PARKING

The nearest accessible parking is directly north of MERF in the [Newton Road Parking Ramp \(NRP Ramp\)](#).

[Click for parking rates](#)

CONFERENCE DIRECTOR



Lauris Kaldjian, MD, PhD

Professor, Department of Internal Medicine
Richard M. Caplan Chair in Biomedical Ethics
Director, Program in Bioethics and Humanities
Consultant, Ethics Consult Service
University of Iowa Carver College of Medicine

CONFERENCE REGISTRATION QUESTIONS

Suzanne Gurnett Streitz, BA
Conference Coordinator
Program in Bioethics and Humanities
319.335.6706 • suzanne-streitz@uiowa.edu

CLICK FOR ADDITIONAL INFORMATION

ACCREDITATION



In support of improving patient care, the University of Iowa Roy J. and Lucille A. Carver College of Medicine is jointly accredited by the Accreditation Council for Continuing Medical Education (ACCME), the Accreditation Council for Pharmacy Education (ACPE), and the American Nurses Credentialing Center (ANCC), to provide continuing education for the healthcare team.

Physician: The University of Iowa Carver College of Medicine designates this live activity for a maximum of 6.0 AMA PRA Category 1 Credits™. Physicians should claim only the credit commensurate with the extent of their participation in the activity.

Nurse: The University of Iowa Carver College of Medicine designates this activity for a maximum of 6.0 ANCC contact hours. Nurses should claim only the credit commensurate with the extent of their participation in the activity.

Social Worker: As a Jointly Accredited Organization, the University of Iowa Roy J. and Lucille A. Carver College of Medicine is approved to offer social work continuing education by the Association of Social Work Boards (ASWB) Approved Continuing Education (ACE) program. Organizations, not individual courses, are approved under this program. Regulatory boards are the final authority on courses accepted for continuing education credit. Social workers completing this course receive 6.0 continuing education credit(s).

Other Provider: All other providers will receive a certificate of participation upon completion of the online evaluation. It is the responsibility of each attendee to determine if the continuing education programs they attend meet the requirements of their professional licensure board.

Disclosure Policy: University of Iowa Roy J. and Lucille A. Carver College of Medicine adheres to the ACCME's Standards for Integrity and Independence in Accredited Continuing Education. Any individuals in a position to control the content of a CE activity, including faculty, planners, reviewers or others are required to disclose all financial relationships with ineligible companies whose primary business is producing, marketing, selling, re-selling, or distributing healthcare products used by or on patients. All relevant financial relationships have been mitigated prior to the commencement of the activity.

The registration fee is \$100 for all attendees and includes refreshments during breaks and lunch. There is no additional cost for CME or CE credit.

**CLICK TO REGISTER
BEFORE MAY 20, 2024**

A late fee of \$25 will be added for registrations after May 20, 2024.

PRESENTERS



Aaron Kunz, DO, MA, MME

Clinical Assistant Professor, Department of Family Medicine
Consultant, Ethics Consult Service
University of Iowa Carver College of Medicine

Four Components of a Moral Event: a Primer on Normative Ethics

Objectives:

1. Describe four components of a moral event: agent, act, circumstance, outcome.
2. Compare four ethical approaches (virtues, principles, narratives, consequences) related to these four components.
3. Develop a pragmatic method for identifying and clarifying ethical problems.



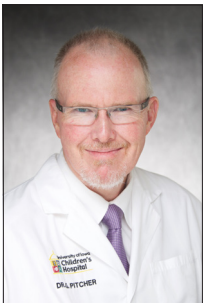
Matthew DeCamp, MD, PhD

Associate Professor
Division of General Internal Medicine and
Center for Bioethics and Humanities
University of Colorado

Real-world Ethics for Artificial Intelligence in Health Care

Objectives:

1. Describe ethical issues that can arise when artificial intelligence (AI) is used in health care settings.
1. Compare and contrast different ways 'fairness' can be defined when assessing biases in AI.
1. Argue that AI-based technologies shape who we are and how we think (and therefore are not mere 'tools').



Graeme Pitcher, MBBCh

Clinical Professor, Department of Surgery (Division of Pediatric Surgery)
Consultant, Ethics Consult Service
University of Iowa Carver College of Medicine

My Injured Adolescent Patient Has a Positive Toxicology Screen – What Should I Do about That? Balancing Health, Privacy, and the Public Good

Objectives:

1. Explore the clinical and ethical justification of screening for substance use in injured adolescents.
2. Examine the institutional response to a positive test.
3. Discuss the ethics of the broader legal and societal implications of adolescent substance use.



Lisa Anderson-Shaw, DrPH, MA, MSN (APRN-C, HEC-C)

Assistant Professor
Loyola University, Chicago
Neiswanger Institute for Bioethics, College of Medicine
Marcella Niehoff School of Nursing

Moral Resilience of Healthcare Professionals

Objectives:

1. Define moral distress, despair, and resilience.
2. Identify why healthcare providers are at great risk for feeling sad, helpless, burned out, guilt, and desperation.
3. Discuss how work and personal environments impact our total self.
4. Examine healthy ways of building moral resilience.

AGENDA | ETHICS IN HEALTHCARE 2024

Each session includes a 1-hour interactive lecture and a 30-minute Q&A.

7:30 – 8:00 AM	Registration and Coffee Atrium, MERF
8:00 - 8:15 AM	Welcome and Announcements Lauris Kaldjian, MD, PhD
8:15 – 9:45 AM	SESSION 1 Four Components of a Moral Event: a Primer on Normative Ethics Aaron Kunz, DO, MA, MME
9:45 – 10:00 AM	Break and Refreshments Atrium, MERF
10:00 – 11:30 AM	SESSION 2 Real-world Ethics for Artificial Intelligence in Health Care Matthew DeCamp, MD, PhD
11:30 – 12:30 PM	Lunch Atrium, MERF
12:30 – 2:00 PM	SESSION 3 My Injured Adolescent Patient Has a Positive Toxicology Screen – What Should I Do about That? Balancing Health, Privacy, and the Public Good Graeme Pitcher, MBBCh
2:00 – 2:15 PM	Break and Refreshments Atrium, MERF
2:15 – 3:45 PM	SESSION 4 Moral Resilience of Healthcare Professionals Lisa Anderson-Shaw, DrPH, MA, MSN (APRN-C, HEC-C)
3:45-4:00 PM	Wrap-Up Lauris Kaldjian, MD, PhD