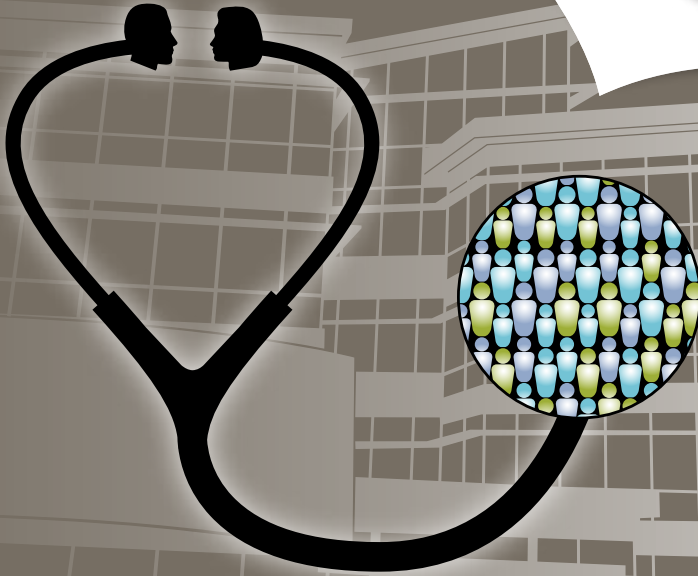


CHANGING MEDICINE.  
CHANGING LIVES.®



# ETHICS IN HEALTHCARE 2019

*A One-Day Conference for Collaborative Dialogue  
and Inter-Professional Exchange*

**Tuesday, May 21, 2019**

**8:00 AM – 4:15 PM**

**University of Iowa Carver College of Medicine**

Medical Education and Research Facility

375 Newton Road, Iowa City, Iowa



**UNIVERSITY OF IOWA**  
**CARVER COLLEGE**  
**OF MEDICINE**

University of Iowa Health Care

# Program Agenda

Tuesday, May 21, 2019

Medical Education Research Facility (MERF)

Three of the sessions include a 40-minute lecture, 35-minute small group case-based discussions, and a 20-minute large group Q&A wrap-up. These sessions will begin in Room 2117 of the Medical Education and Research Facility (MERF). Our keynote session includes a 1-hour lecture followed by 35 minutes for Q&A and discussion. This session will be held in 1110 MERF and will be open to the University community.

7:30 – 8:00 AM	Registration and Coffee Atrium, MERF
8:00 – 8:15 AM	Welcome and Announcements Lauris Kaldjian, MD, PhD 2117 MERF
8:15 – 9:50 AM	<b>SESSION 1</b> <b>Opioid Treatment Agreements: Opportunities, Challenges, and Ethical Issues</b> Rebecca Benson, MD, PhD 2117 MERF
9:50 – 10:10 AM	Break and Refreshments Atrium, MERF
10:10 – 11:45 AM	<b>SESSION 2</b> <b>Implicit Bias and Culturally Responsive Health Care</b> David Moser, PhD 2117 MERF
11:45 – 12:45 PM	<b>Lunch</b> Atrium, MERF
12:45 – 2:20 PM	<b>SESSION 3</b> <b>Keynote Presentation – Communication in Serious Illness: Ethical Values, Empirical Evidence, and Clinical Experience</b> Laura Hanson, MD, MPH 1110 MERF
2:20 – 2:40 PM	Break and Refreshments Atrium, MERF
2:40 – 4:15 PM	<b>SESSION 4</b> <b>From Theory to Practice: Ethical Principles and Virtues in the Real World of Healthcare</b> Lauris Kaldjian, MD, PhD 2117 MERF

# Conference Faculty

## Keynote Speaker



**LAURA HANSON, MD, MPH**  
Professor, Division of Geriatric Medicine  
Director, UNC Palliative Care Program  
University of North Carolina at Chapel Hill

## University of Iowa Carver College of Medicine Faculty



**REBECCA BENSON, MD, PHD**  
Director, Ethics Consult Service  
Medical Director, Pediatric  
Pain & Palliative Care Program  
Clinical Associate Professor,  
Stead Family Department of  
Pediatrics (Division of General  
Pediatrics and Adolescent Medicine)



**BRITTANY BETTENDORF, MD**  
Clinical Assistant Professor,  
Department of Internal Medicine  
(Division of Rheumatology)



**LAURIS C. KALDJIAN, MD, PHD**  
Richard M. Caplan Chair in  
Biomedical Ethics  
Professor, Department of  
Internal Medicine  
Director, Program in Bioethics  
and Humanities  
Consultant, Ethics Consult Service



**LOU ANN MONTGOMERY, PHD,  
RN-BC**  
Director, Professional Development  
and Advanced  
Practice|Nursing Services & Patient Care  
Nursing Director, Emergency Medical  
Services Learning Resource Center  
Co-Director, Nursing Clinical Education  
Center  
University of Iowa Health Care



**AARON KUNZ, DO, MA, MME**  
Clinical Assistant Professor  
Department of Family Medicine



**GINNY RYAN, MD**  
Associate Professor, Department of  
Obstetrics and Gynecology  
(Division of Reproductive Endocrinology  
and Fertility)  
Consultant, Ethics Consult Service  
Chair, Ethics Subcommittee



**DAVID MOSER, PHD**  
Vice Chair, Faculty Development  
Professor of Psychiatry

**Conference Director:**  
**LAURIS C. KALDJIAN, MD, PHD**

**Conference Coordinator:**  
**JOYCE M. CRAIG**

# General Information

## Audience

Physicians, Nurses, Social Workers, Chaplains, Attorneys, Physician Assistants, Trainees, Students, and Others.

## Background

With the steady introduction of more treatment options and biotechnologies, an increasing number and range of ethical challenges in health care are emerging. This conference is designed to help professionals meet these challenges through their work as clinicians, members of ethics committees or ethics consult teams, and administrators.

## Purpose

- Provide up-to-date information in healthcare ethics relevant to clinical practice.
- Provide approaches to ethical reasoning that clarify ethical problems.
- Facilitate professional discussion of ethical challenges and decision making in healthcare.
- Encourage professional networking for ongoing dialogue, support, and collaboration.

## Approach

- Three sessions covering different topics in clinical ethics.
  - Each session provides a lecture, small group case-based discussion, and a large group Q&A wrap-up.
- A keynote lecture followed by discussion/ Q&A.
- Time and opportunity for dialogue and networking.

## Objectives

### SESSION ONE

- Describe the role of opioid treatment agreements and the components of a standard document.
- Discuss ethical concerns raised about opioid treatment agreements, including possibilities of coercion, stigmatization, abandonment, and harm to the doctor-patient relationship.
- Demonstrate how use of an opioid treatment agreement can support respect for persons by improving informed decision-making.

- Discuss the patient health and public health justifications for the surveillance and monitoring of opioid pain medications.

### SESSION TWO

- Describe the concept of implicit bias and how it affects our interactions with others.
- Gain insight into our own implicit biases.
- Discuss how to mitigate one's own biases.
- Discuss how to promote and provide culturally responsive health care.

### SESSION THREE – Keynote Presentation

- Explore relevant ethical theory framing best practices for serious illness communication.
- Review empirical evidence linking high quality communication to patient and family outcomes in serious illness.
- Discuss application of communication skills in goals of care decision-making in serious illness.

### SESSION FOUR

- Describe contrasts between ethical approaches based on principles, virtues, and consequences.
- Apply principles and virtues to clinical settings (informed consent, end-of-life care, error disclosure).
- Relate the virtue of integrity to the problem of moral distress and the need for conscientious practice.

## Continuing Education Credit

The University of Iowa Roy J. and Lucille A. Carver College of Medicine is accredited by the Accreditation Council for Continuing Medical Education (ACCME) to provide continuing medical education for physicians.

**Physicians:** The University of Iowa Carver College of Medicine designates this live activity for a maximum of 6.0 AMA PRA Category 1 Credit(s)<sup>™</sup>. Physicians should claim only the credit commensurate with the extent of their participation in the activity.

**Nurses:** This program is offered in cooperation with the University of Iowa College of Nursing, an Iowa Board of Nursing approved provider, number 1. Full time attendance will

award 6.0 contact hours. Program number 19-141-93 has been assigned.

### **Registration**

The registration fee is \$100 for all attendees and includes refreshments during breaks and lunch. There will be an additional fee of \$25 if you would like continuing education credit. While registration is open until the start of the meeting, we encourage registration by May 14, 2019, to enable us to provide the best possible service to participants. A late fee of \$25 will be added for registrations made after May 14, 2019.

### **Cancellation Policy**

Registrations canceled on or before May 14, 2019, will be refunded minus a \$25 processing fee. Registrations canceled after May 14, 2019 will not be refunded. To cancel your registration, please call the Program in Bioethics and Humanities Office @ 319-335-6706.

### **A Note Regarding Room Temperatures**

It is difficult to maintain climate control in a conference facility in a way that will satisfy all participants. For your comfort, you may wish to bring a sweater or jacket to the conference, in case one is needed.

### **Parking**

Parking is available in Newton Road Parking Ramp at a maximum cost of \$20 per day. The location of the Newton Road Parking Ramp may be found at our conference website: <https://medicine.uiowa.edu/bioethics/ethics-healthcare-conference>. Please follow the signs to the ramp entrance.

### **Hotels**

Participants are responsible for making their own hotel reservations, if needed, and may do so by contacting the Iowa City/Coralville Convention and Visitors Bureau at (800) 283-6592 or any hotel in the Iowa City area. The following hotels have complimentary shuttle service to the UI Healthcare campus: Hilton Garden Inn Iowa City Downtown University (319) 248-6100; the Coralville Marriott Hotel & Conference Center (319) 688-4000; and the Radisson Hotel & Conference Center (Coralville) (319) 351-5049. Rates are not guaranteed.



# Ethics in Healthcare 2019

A One-Day Conference for Collaborative Dialogue  
and Inter-Professional Exchange



## Sponsored by

the Program in Bioethics and Humanities  
at the University of Iowa Carver College of Medicine  
in cooperation with the University of Iowa College of Nursing

## Disability Statement

The University of Iowa prohibits discrimination in employment, educational programs, and activities on the basis of race, national origin, color, creed, religion, sex, age, disability, veteran status, sexual orientation, gender identity, or associational preference. The University also affirms its commitment to providing equal opportunities and equal access to University facilities. For additional information, contact the Office of Equal Opportunity and Diversity (319)335-0705.

Individuals with disabilities are encouraged to attend all University of Iowa sponsored events. If you are a person with a disability who requires an accommodation in order to participate in this program, please contact the Continuing Medical Education Division in advance at (319)335-8599.

## Faculty Disclosure

Everyone in a position to control the content of this educational activity will disclose to the CME provider and to attendees all relevant financial relationships with any commercial interest.

Determination of educational content for this program and the selection of speakers are responsibilities of the conference director. There is no commercial or outside support for this conference.

# Registration

Ethics in Healthcare 2019

TUESDAY, MAY 21, 2019

## TWO WAYS TO REGISTER:

**If paying by check, please complete the registration form and send it along with your check, made payable to The University of Iowa, to the following address:**

Joyce M. Craig  
University of Iowa Carver College of Medicine  
Program in Bioethics and Humanities  
500 Newton Road  
1-106 Medical Education Building  
Iowa City, IA 52242

*Payment is required at time of registration.  
We will not consider you registered until payment is received.*

**To pay with a credit card, please go to the following link to register online.**

<https://www.signmeup.com/site/reg/register.aspx?fid=NF2V2H7>

While registration is open until the start of the meeting, we encourage registration by May 14, 2019, to enable us to provide the best possible service to participants. **A late fee of \$25 will be added for registrations received after May 14, 2019.** Registrations canceled on or before May 14, 2019, will be refunded minus a \$25 processing fee. Registrations canceled after May 14, 2019 will not be refunded. To cancel your registration, please call the Program in Bioethics and Humanities Office @ 319-335-6706.

Please print clearly:

Name \_\_\_\_\_

Address \_\_\_\_\_

City \_\_\_\_\_ State/ZIP \_\_\_\_\_

Phone \_\_\_\_\_ Email \_\_\_\_\_

Company or Business Name \_\_\_\_\_

Please select your professional role **(required)**:

- |  |                                   |
|--|-----------------------------------|
| <input type="checkbox"/> Physician                     | <input type="checkbox"/> Chaplain |
| <input type="checkbox"/> Physician Assistant           | <input type="checkbox"/> Attorney |
| <input type="checkbox"/> Nurse                         | <input type="checkbox"/> Trainee  |
| <input type="checkbox"/> Social Worker                 | <input type="checkbox"/> Student  |
| <input type="checkbox"/> Other (please describe) _____ |                                   |

**DEGREE(s)**

**required for CME/CEU credit:**

\_\_\_\_\_

Do you have a dietary restriction?  Gluten Free  Vegetarian  Other (describe below)

## REGISTRATION FEES:

Conference Fee:	\$ 100
If you are requesting Continuing Education Credits:	\$ 25
Late Fee (after 5/14/19)	\$ 25

*Please note the cost of all day parking at the Newton Road Parking Ramp is \$20 and is paid when exiting the ramp.*

**TOTAL AMOUNT ENCLOSED:** \$ \_\_\_\_\_



University of Iowa Health Care

*Continuing Medical Education*  
100 Medicine Administration Building  
Iowa City, Iowa 52242-1101



**TUESDAY, MAY 21, 2019**

Medical Education and Research Facility  
375 Newton Road, Iowa City, Iowa