

Ethics in Healthcare 2018

A One-Day Conference for Collaborative Dialogue and Inter-Professional Exchange



Sponsored by

the Program in Bioethics and Humanities at the University of Iowa Carver College of Medicine in cooperation with the University of Iowa College of Nursing

Disability Statement

The University of Iowa prohibits discrimination in employment, educational programs, and activities on the basis of race, national origin, color, creed, religion, sex, age, disability, veteran status, sexual orientation, gender identity, or associational preference. The University also affirms its commitment to providing equal opportunities and equal access to University facilities. For additional information, contact the Office of Equal Opportunity and Diversity (319)335-0705.

Individuals with disabilities are encouraged to attend all University of Iowa sponsored events. If you are a person with a disability who requires an accommodation in order to participate in this program, please contact the Continuing Medical Education Division in advance at (319)335-8599.

Faculty Disclosure

Everyone in a position to control the content of this educational activity will disclose to the CME provider and to attendees all relevant financial relationships with any commercial interest.



University of Iowa Health Care

Continuing Medical Education
100 Medicine Administration Building
Iowa City, Iowa 52242-1101



FRIDAY, MAY 18, 2018

Medical Education and Research Facility
375 Newton Road, Iowa City, Iowa

ETHICS IN HEALTHCARE 2018

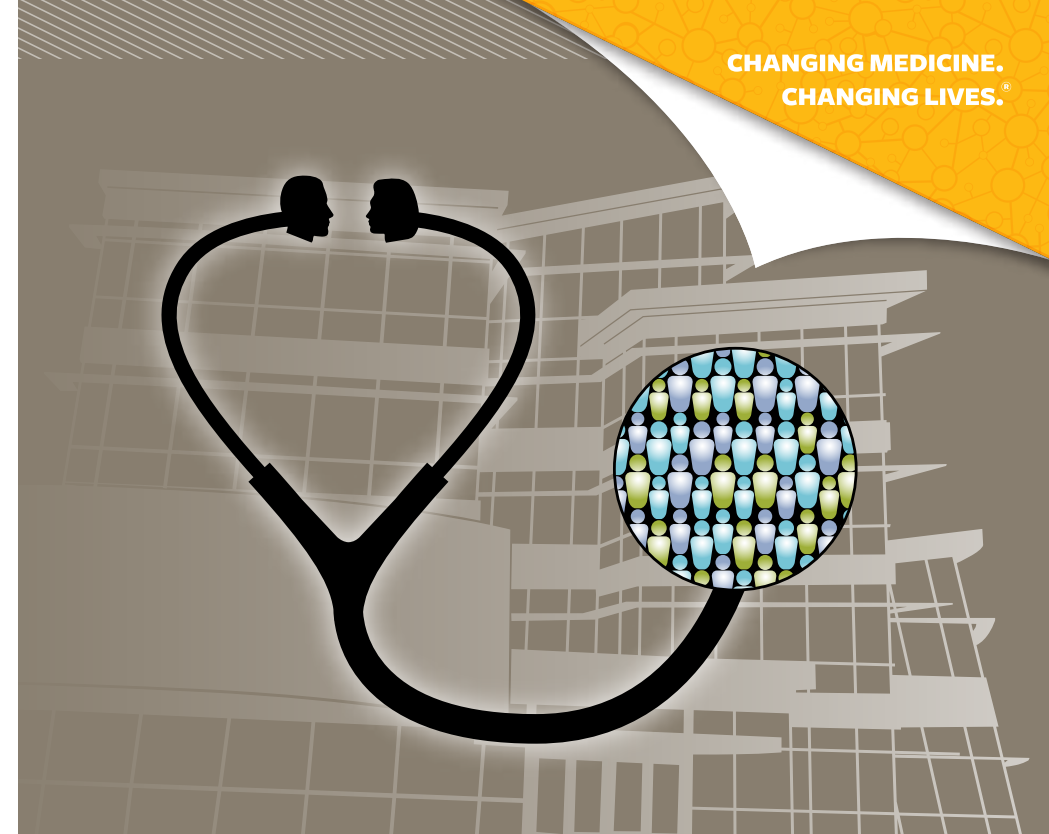
A One-Day Conference for Collaborative Dialogue and Inter-Professional Exchange

FRIDAY, MAY 18, 2018

University of Iowa Carver College of Medicine
Medical Education and Research Facility
375 Newton Road, Iowa City, Iowa



CHANGING MEDICINE.
CHANGING LIVES.™



Agenda

Friday, May 18, 2018

Medical Education Research Facility (MERF)

Three of the sessions include a 40-minute lecture, 30-minute small group case-based discussions, and a 15-minute large group Q&A wrap-up. These sessions will begin in Room 2117 of the Medical Education and Research Facility (MERF). Our keynote session includes a 1-hour lecture followed by 30 minutes for Q&A and discussion. This session will be held in 1110 MERF and will be open to the University community.

7:30 – 8:00 AM	Registration and Coffee Atrium, MERF
8:00 – 8:15 AM	Welcome and Announcements Lauris Kaldjian, MD, PhD 2117 MERF
8:15 – 9:45 AM	SESSION 1 Assessing Decision Making Capacity in Patients with Medical or Psychiatric Conditions David Moser, PhD 2117 MERF
9:45 – 10:15 AM	Break and Refreshments Atrium, MERF
10:15 – 11:45 AM	SESSION 2 <i>Keynote Speaker</i> Intensive Care for Fragile Neonates: What is the Value of Life? Annie Janvier, MD, PhD 1110 MERF
11:45 – 12:45 PM	Lunch Atrium, MERF
12:45 – 2:15 PM	SESSION 3 Ethical Issues Surrounding Palliative Sedation at the End of Life W. David Clark, MD 2117 MERF
2:15 – 2:45 PM	Break and Refreshments Atrium, MERF
2:45 – 4:15 PM	SESSION 4 Caring for Patients Through Complex and Suboptimal Interpersonal and Professional Dynamics Christopher Buresh, MD, MPH 2117 MERF

General Information

Audience

Physicians, Nurses, Social Workers, Chaplains, Attorneys, Physician Assistants, Trainees, Students, and Others

Background

With the steady introduction of more treatment options and biotechnologies, an increasing number and range of ethical challenges in health care are emerging. This conference is designed to help professionals meet these challenges through their work as clinicians, members of ethics committees or ethics consult teams, and administrators.

Purpose

- Provide up-to-date information in healthcare ethics relevant to clinical practice.
- Provide approaches to ethical reasoning that clarify ethical problems.
- Facilitate professional discussion of ethical challenges and decision making in healthcare.
- Encourage professional networking for ongoing dialogue, support, and collaboration.

Approach

- Three sessions (each 1.5 hours) covering different topics in clinical ethics.
 - Each session provides a lecture, small group case-based discussion, and a large group Q&A wrap-up.
- A 1-hour keynote lecture followed by 30 minutes of discussion/Q&A.
- Time and opportunity for dialogue and networking.

Objectives

SESSION ONE

- Identify the abilities underlying capacity to consent to treatment.
- Describe how to assess capacity for consent in medical and psychiatric settings.
- Recognize how to maximize the patient's capacity for consent when possible.
- Describe the concept of sliding thresholds in the determination of capacity for consent.

SESSION TWO – Keynote Presentation

- Describe life and death decisions in Neonatology.

- Contrast the perspectives of healthcare providers and parents.
- Analyze intensive care decisions and end-of-life decisions for neonates.
- Reflect on the moral difference between neonates and older patients.

SESSION THREE

- Define the terms palliative sedation, proportional sedation, respite sedation, and continuous sedation.
- List the symptoms for which palliative sedation is most commonly used.
- Summarize the conditions that should be met before palliative sedation is used.
- Review potential ethical concerns in the application of palliative sedation.

SESSION FOUR

- Describe the interpersonal challenges of caring for patients in complex and dynamic environments when a good healing relationship is difficult to establish.
- List common types of clinical scenarios that may lead to diagnostic and treatment disagreements.
- Describe the difference between the 'negative' right to be left alone and the 'positive' right to receive a specific treatment and apply these rights to emergency situations recognizing the impact of implied consent and federal EMTALA laws.
- Evaluate the role of the professional's conscientious practice when faced with a serious disagreement with a patient.

Continuing Education Credit

The University of Iowa Roy J. and Lucille A. Carver College of Medicine is accredited by the Accreditation Council for Continuing Medical Education (ACCME) to provide continuing medical education for physicians.

Physicians: The University of Iowa Roy J. and Lucille A. Carver College of Medicine designates this live activity for a maximum of 6 AMA PRA Category 1 Credit(s)[™]. Physicians should claim only the credit commensurate with the extent of their participation in the activity.

Nurses: This program is offered in cooperation with the University of Iowa College of Nursing,

an Iowa Board of Nursing approved provider, number 1. Full time attendance will award 6.0 contact hours. Program number 18-138-97 has been assigned.

Registration

The registration fee is \$100 for all attendees and includes refreshments during breaks and lunch. There will be an additional fee of \$25 if you would like continuing education credit.

While registration is open until the start of the meeting, we encourage registration by May 11, 2018, to enable us to provide the best possible service to participants. A late fee of \$25 will be added for registrations made after May 11, 2018.

Cancellation Policy

Registrations canceled on or before May 4, 2018, will be refunded minus a \$25 processing fee. Registrations canceled after May 4, 2018 will not be refunded. To cancel your registration, please call the Program in Bioethics and Humanities Office @ 319-335-6706.

A Note Regarding Room Temperatures

It is difficult to maintain climate control in a conference facility in a way that will satisfy all participants. For your comfort, you may wish to bring a sweater or jacket to the conference, in case one is needed.

Parking

Parking is available in Newton Road Parking Ramp at a maximum cost of \$20 per day. The location of the Newton Road Parking Ramp may be found at our conference website: www.medicine.uiowa.edu/bioethics/ethicsin-healthcare. Please follow the signs to the ramp entrance.

Hotels

Participants are responsible for making their own hotel reservations, if needed, and may do so by contacting the Iowa City/Coralville Convention and Visitors Bureau at (800) 283-6592 or any hotel in the Iowa City area. The following hotels have complimentary shuttle service to the UI Healthcare campus: Hilton Garden Inn Iowa City Downtown University (319) 248-6100; the Coralville Marriott Hotel & Conference Center (844) 631-0595; and the Holiday Inn Express (Coralville) (877) 859-5095. Rates are not guaranteed.



Registration

Ethics in Healthcare 2018

FRIDAY, MAY 18, 2018

TWO WAYS TO REGISTER:

If paying by check, please complete the registration form and send it along with your check, made payable to The University of Iowa, to the following address:

Joyce M. Craig
University of Iowa Carver College of Medicine
Program in Bioethics and Humanities
500 Newton Road
1-106 Medical Education Building
Iowa City, IA 52242

*Payment is required at time of registration.
We will not consider you registered until payment is received.*

To pay with a credit card, please go to the following link to register online.
<https://www.signmeup.com/site/reg/register.aspx?fid=W92V8H7>

While registration is open until the start of the meeting, we encourage registration by May 11, 2018, to enable us to provide the best possible service to participants. **A late fee of \$25 will be added for registrations received after May 11, 2018.** Registrations canceled on or before May 4, 2018, will be refunded minus a \$25 processing fee. Registrations canceled after May 4, 2018 will not be refunded. To cancel your registration, please call the Program in Bioethics and Humanities Office @ 319-335-6706.

Please print clearly:

Name _____

Address _____

City _____ State/ZIP _____

Phone _____ Email _____

Company or Business Name _____

Please select your professional role **(required)**:

- | | |
|--|-----------------------------------|
| <input type="checkbox"/> Physician | <input type="checkbox"/> Chaplain |
| <input type="checkbox"/> Physician Assistant | <input type="checkbox"/> Attorney |
| <input type="checkbox"/> Nurse | <input type="checkbox"/> Trainee |
| <input type="checkbox"/> Social Worker | <input type="checkbox"/> Student |
| <input type="checkbox"/> Other (please describe) _____ | |

Do you have a dietary restriction? Gluten Free Vegetarian Other

Would you like to share your contact information with other attendees? Yes No

REGISTRATION FEES:

Conference Fee: \$ 100
If you are requesting Continuing Education Credits: \$ 25
Late Fee (after 5/11/18) \$ 25

TOTAL AMOUNT ENCLOSED: \$ _____

Conference Faculty

Keynote Speaker



ANNIE JANVIER, MD, PHD

Associate Professor, Department of Pediatrics, University of Montreal
Neonatologist and Clinical Researcher, Neonatal Intensive Care Unit, CHU Sainte-Justine
Member, Clinical Ethics Unit, CHU Saint-Justine
Co-director, Microprogram and Master's in Pediatric Clinical Ethics, University of Montreal

University of Iowa Carver College of Medicine Faculty



REBECCA BENSON, MD, PHD

Director, Ethics Consult Service
Medical Director, Pediatric
Pain & Palliative Care Program
Clinical Assistant Professor,
Department of Pediatrics
(Division of General Pediatrics
and Adolescent Medicine)



BRITTANY BETTENDORF, MD

Clinical Assistant Professor,
Department of Internal Medicine
(Division of Rheumatology)



DEB BRANDT, PHD, MSB, RN

Research Assistant Professor
of Obstetrics and Gynecology
Reproductive Science Research



CHRISTOPHER T. BURESH, MD, MPH

Representative, State EMS
Advisory Council
Medical Director, Keokuk County
Ambulance Service
Ambassador to Haiti, American College
of Emergency Medicine
Clinical Professor of Emergency Medicine



ERICA CARLISLE, MD

Assistant Professor, Department
of Surgery (Division of Pediatric
Surgery)
Consultant, Ethics Consult Service



W. DAVID CLARK, MD

Clinical Associate Professor
of Family Medicine
Interim Program Director,
Department of Family Medicine
Clinical Associate Professor
of Internal Medicine



LAURIS C. KALDJIAN, MD, PHD

Richard M. Caplan Chair in
Biomedical Ethics
Professor, Department of
Internal Medicine
Director, Program in Bioethics
and Humanities
Consultant, Ethics Consult Service



JOSHUA KAPFHAMER, MD, MA

Visiting Associate Professor
Department of Obstetrics
and Gynecology
(Division of Reproductive
Endocrinology and Fertility)



DAVID MOSER, PHD

Professor of Psychiatry
Assistant Dean of Faculty
Affairs and Development



GINNY RYAN, MD

Associate Professor, Department of
Obstetrics and Gynecology
(Division of Reproductive Endocrinology
and Fertility)
Consultant, Ethics Consult Service
Chair, Ethics Subcommittee

Conference Director: LAURIS C. KALDJIAN, MD, PHD

Conference Coordinator: JOYCE M. CRAIG