

# BIOETHICS AND HUMANITIES NEWSLETTER



PROGRAM IN BIOETHICS AND HUMANITIES

January 2016

**Happy New Year and Welcome** to the monthly Bioethics and Humanities Newsletter provided by the Program in Bioethics and Humanities at the University of Iowa Carver College of Medicine.

## Program in Bioethics and Humanities: *Our Mission*

We are committed to helping healthcare professionals explore and understand the increasingly complex ethical questions that have been brought on by advances in medical technology and the health care system. We achieve this through education, research, and service within the Carver College of Medicine, University of Iowa Health Care, University of Iowa, and the wider Iowa community.

[More Details About The Program](#)

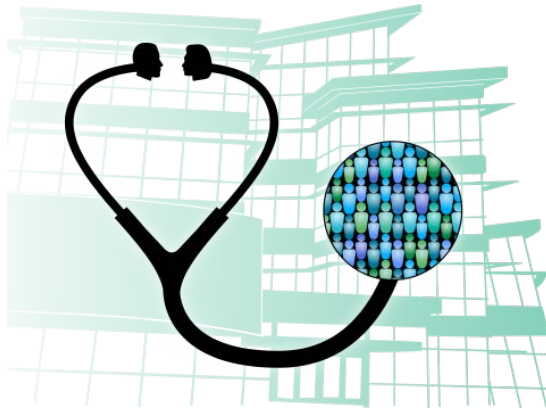


## Program Highlight

### [Ethics in Healthcare 2016](#)

A One-Day Conference for Collaborative Dialogue and Inter-Professional Exchange

**Date: May 20, 2016**  
**Time: 7:45 AM – 4:45 PM**



The University of Iowa Roy J. and Lucille A. Carver College of Medicine and the Program in Bioethics and Humanities will host its first one day conference on May 20, 2016 in the Medical Education and Research Facility (MERF), Room 2117. This conference is designed to help healthcare professionals meet the challenges of the increasing number and range of ethical challenges in healthcare as they surface in their work as clinicians, members of ethics committees or ethics consult teams, and administrators.

## Upcoming Events

For a listing of more upcoming events related to bioethics and humanities, please click [here](#).

## Reading Ethics at UIHC

If you are interested to see what the UIHC Ethics Subcommittee was reading in December, please click [here](#).

## Quotation of the Month

*The operationalisation of goals of care must take place in a shared decision-making process, where the professional duty is to translate the personal goals into realistic professional goals aligned with clinical, financial, ethical and regulatory boundaries.*

Berntsen et al. (for more, see [BMJ Open](#); 2015)

For a printable brochure, [click here](#). For a printable flyer, click the PDF attached above.

**Intended Audience:** Physicians, Nurses, Social Workers, Chaplains, Physician Assistants, Trainees, Students, and Others

For more information about the conference and to register, please click [here](#).

---

## Bioethics in the Literature

- Berntsen GK, Gammon D, Steinsbekk A, et al. How do we deal with multiple goals for care within an individual patient trajectory? A document content analysis of health service research papers on goals for care. [BMJ Open](#). 2015; 5: e009403.
- Bognar G. Is disability mere difference? [J Med Ethics](#). 2016 Jan; 42: 46-49.
- Drake N. Is moral bioenhancement dangerous? [J Med Ethics](#). 2016 Jan; 42: 3-6.
- Fotaki M. Why and how is compassion necessary to provide good quality healthcare? [Int J Health Policy Manag](#). 2015 Apr; 4: 199-201.
- Hall DE, Hanusa BH, Ling BS, et al. Using the IRB researcher assessment tool to guide quality improvement. [J Empir Res Hum Res Ethics](#). 2015 Dec; 10: 460-469.
- Ho A, Spencer M, McGuire M. When frail individuals or their families request nonindicated interventions: Usefulness of the four-box ethical approach. [J Am Geriatr Soc](#). 2015 Aug; 63: 1674-1678.
- Kraft S, Porter K, Wilfond B, et al. Research on medical practices and patient-physician relationship: What can regulators learn from patients? [AMA J Ethics](#). 2015 Dec; 17: 1160-1165.
- Nair-Collins M. Taking science seriously in the debate on death and organ transplantation. [Hastings Cent Rep](#). 2015 Nov-Dec; 45: 38-48.

---

## [Robert D. Sparks Writing Contest](#)



The purpose of this contest is to examine the influences of history, ethics, culture, literature, philosophy, sociology, or related frameworks on medicine, the practice of medicine, and the human condition.

Two \$1,200 awards will be given to the best submissions that examine a significant issue in medicine using ethical, historical, or cultural perspectives. This competition is open to all medical students and physician assistant students enrolled in the UI Carver College of Medicine.

Deadline for entry: March 22, 2016  
Length: 2500-5000 words

For more information, please click [here](#).

---

## UIHC Ethics Consult Service

This service is a resource for patients, family members, or health professionals at UIHC who would like help addressing an ethical question or problem related to a patient's care. Consults can be ordered by UIHC clinicians through EPIC. Consults can also be requested by calling (319) 356-1616 and asking for the ethics consultant on call. For more information, please click [here](#).

---

## Clinical Research Ethics Consultation Service

We provide free consultation on ethical issues related to research design, tissue banking, genetic research results, informed consent, and working with vulnerable patient populations. In particular, we assist clinical investigators in identifying and addressing the ethical challenges that frequently arise when designing or conducting research with human subjects. These include ethical challenges in sampling design; randomized and placebo-controlled studies; participant recruitment and informed consent; return of individual-level research results; community engagement processes; and more. For more information, please click [here](#).

---

## The American Osler Society

### [William B. Bean Student Research Award](#)

DEADLINE: March 1, 2016

The American Osler Society announces the availability of an award for support of research in the broad areas of medical history and medical humanities. Candidates must be currently matriculated students in approved schools of medicine in the United States or Canada. The successful applicant may be eligible to present a paper based on his or her findings at the annual meeting of the American Osler Society. The stipend for the coming year will be \$1,500, and up to \$750 additional may be available to support travel to the annual meeting contingent on submission of a paper acceptable to the Committee at the conclusion of the studentship. If you would like more information, please click [here](#).

---

## Summer Undergraduate Program in Biomedical Ethics Research

The Mayo Clinic Biomedical Ethics Program seeks applicants for its 2016 summer student program. This program is supported in part by a generous gift from Jim Vann and Lee Stanton Vann. 4-6 students will be selected for the program. Each student will be placed with a faculty mentor to work on a particular research project for approximately 10 weeks. In addition, students will participate in educational sessions on bioethics research methods and lunch meetings with faculty. Students also may have the opportunity to shadow physicians or clinical ethics consultations.

Interested applicants should apply to job posting **58853BR: Bioethics Intern** on the Mayo Clinic jobs website (<http://www.mayoclinic.org/jobs>) by **Jan. 15, 2016**.

Candidates must attach the following documents to the online application:

1. Cover letter describing your career goals and how biomedical ethics research relates to those goals
2. Resume/CV that includes your major, relevant coursework, honors, and related experiences
3. A 5-10 page writing sample (such as a course paper), preferably on a topic in biomedical ethics
4. Current college transcript
5. Two letters of recommendation from research mentors or undergraduate professors (addressed to Dr. Richard Sharp, Program Director). Letters either can be uploaded by the candidate into the application or emailed directly by the professor/mentor to [bioethics@mayo.edu](mailto:bioethics@mayo.edu).

Top applicants will be invited to participate in a brief phone interview to discuss specific skills and areas of interest, in order to match the applicant with a mentor and research project. Final decisions will be made based on applicants' interests and availability of appropriate mentors. All students must pass a background check and post-offer placement assessment prior to their start date.

## History of Medicine Society

The University of Iowa History of Medicine Society invites you to hear Jennifer Gunn present on "Injections, Itches, and Institutions: The Experience of Rural Medicine in Iowa, 1910-1950" on Thursday, January 28, 2016 from 5:30-6:30 pm in the Medical Education Research Facility (MERF), Room 2117. For more information, [please click here](#).

The University of Iowa History of Medicine Society also invites you to read "[Notes from the John Martin Rare Book Room, December 2015.](#)"

The University of Iowa History of Medicine Society (HOMS) and the John Martin Rare Book Room now have a large number of video and audio recordings of HOMS lectures from 1985-2015. To access the recordings, [please click here](#).

Examples of research topics that might be explored include:

- Ethical issues in life-sustaining treatments and end-of-life care
- Research ethics
- Ethical issues in regenerative medicine and transplantation
- Allocation of health care resources
- Professionalism in medicine and science
- Ethical issues in genomics and individualized medicine
- Science and society
- Research related to clinical ethics consultation - Reproductive ethics and prenatal testing

Students who have already participated in the program are not eligible, but previous applicants are encouraged to reapply.

For further information or specific questions, contact Dr. Jessica Hirsch, Biomedical Ethics Education Coordinator at 507-538-4023 or [Hirsch.jessica@mayo.edu](mailto:Hirsch.jessica@mayo.edu)

---

## **Post-Baccalaureate Program in Biomedical Ethics Research**

The Mayo Clinic Biomedical Ethics Program seeks applicants for a one-year post-baccalaureate research experience in empirical bioethics research, as part of the Mayo Clinic Graduate Research Employment Program (GREP). Students will participate in educational activities and conduct bioethics research in a mentored environment. GREP is designed for individuals who have completed a bachelor's degree and plan to attend graduate school or medical school. Eligible candidates must have received their bachelor's degree before the position starts. GREP students are eligible to take graduate-level courses through the Mayo Graduate School. The position is ideal for students interested in a "gap year" between their undergraduate and graduate degree programs. Two post-baccalaureate research fellows will be selected for the 2016-2017 academic year. We anticipate that these research fellows will begin their positions in the summer of 2016. The position may be extended beyond one year at the discretion of the supervisor but will not exceed a total of two years.

### **Qualifications:**

To be eligible, students must have completed their bachelor's degree before the position start date and must be pursuing medical/graduate school admission. Students must be U.S. citizens or permanent residents. All students must pass a background check and post-offer placement assessment prior to their start date. Students must have completed coursework in bioethics or a closely related discipline such as behavioral psychology, ethics/philosophy, medical anthropology/sociology, pre-med, or public health. The successful applicants will be:

- committed to pursuing a career in which they will engage topics in biomedical ethics
- able to work independently
- proficient in written and verbal communication
- competent in identifying relevant peer-reviewed publications on specialized research topics
- highly motivated to learn new research methods

**To Apply:**

Interested applicants should email the following materials to [bioethics@mayo.edu](mailto:bioethics@mayo.edu) by **March 18, 2016**.

1. Cover letter describing your career goals and how biomedical ethics research relates to those goals
2. Resume/CV that includes your major, relevant coursework, honors, and related experiences
3. A 5-10 page writing sample (such as a course paper), preferably on a topic in biomedical ethics
4. Current college transcript
5. Two letters of recommendation from research mentors or undergraduate teachers (addressed to Dr. Richard Sharp, Program Director). *Letters should be sent directly by the recommender and must be received by the application deadline.*

For more information, contact Dr. Jessica Hirsch, Biomedical Ethics Education Coordinator at 507-538-4023 or [Hirsch.jessica@mayo.edu](mailto:Hirsch.jessica@mayo.edu).

For all other questions, please contact Dr. Richard R. Sharp, Director of the Biomedical Ethics Research Program at [bioethics@mayo.edu](mailto:bioethics@mayo.edu).

---

To unsubscribe from the Bioethics and Humanities monthly Newsletter, please click [here](#).

-----  
Laura Shinkunas  
Editor, Bioethics and Humanities Newsletter  
Program in Bioethics and Humanities  
500 Newton Road, 1-110 MEB  
(319) 384-4654  
[laura-shinkunas@uiowa.edu](mailto:laura-shinkunas@uiowa.edu)