

emrU: College of Nursing goes live!

emrU newsletter, May 2014, by [Nick May](#).

This month marked the first use of emrU outside of a traditional classroom environment and a new digital sign featuring emrU. Additionally, please [contact Nick May](#) if you would like to build a patient for the **Fall 2014 semester** by **June 13th** if possible.

The College of Nursing goes live with emrU

This month marked the first use of emrU as a *tool of simulation*. In partnership with University of Iowa Hospitals & Clinics' (UIHC) Department of Nursing the College of Nursing maintains a state-of-the-art clinical simulation center within UIHC. The *Nursing Clinical Education Center* features multiple clinic and inpatient rooms and also includes an interactive high fidelity mannequin.

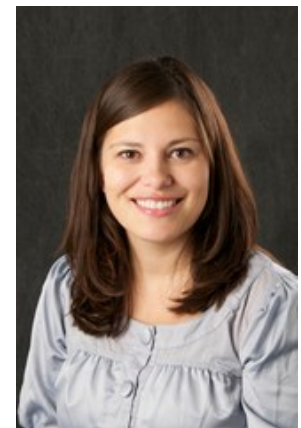
During simulation nursing students walk through various patient care scenarios in the role of a nurse. We integrated emrU into one of these scenarios, lasting approximately an hour, to provide a full-featured medical record that included chart notes, lab results, and recorded vitals.

Twelve more simulated patients are in the project plan for the College of Nursing and emrU. We anticipate that these patients will be reusable for staff education and competency assessment within the Department of Nursing at UIHC.

We caught up with Deb McCarthy, who pioneered this use of emrU in simulation, to ask her a couple of questions:

Q: How is emrU used in your class?

Deb McCarthy: During the Spring Semester, we piloted the use of emrU for our second semester undergraduate nursing students. During their second semester, the students experience high fidelity simulations on a weekly basis, using a variety of scenarios. We have used other platforms for an EMR in the past but we are very much looking forward to using emrU to make the EMR more realistic and recognizable to our students.



Deb McCarthy, MA, BSN, RN is a Lecturer in the University of Iowa College of Nursing.

Q: What does emrU let you do that you couldn't do before?

Deb McCarthy: It gives us a more realistic EMR tool and, therefore, increased fidelity in our simulations. Having the students use something that they use in their clinical experience [the Epic electronic medical record], helps to make their experience in simulation even richer.

The College of Nursing is always looking for ways to continue to bring a high quality education to our students, including innovative learning technologies. emrU is certainly another piece to growing our simulations and the overall learning experience for our students.

Q: What would you tell others (deans, professors, course directors, other medical professionals) about emrU?

Deb McCarthy: As demonstrated by our student survey, the students very much liked the use of emrU in simulation. Although we know we have some continued work in the future to make the environment even closer to production Epic, we have had much encouragement from students to continue the build and that it helped to have something they use frequently in their clinical rotations.

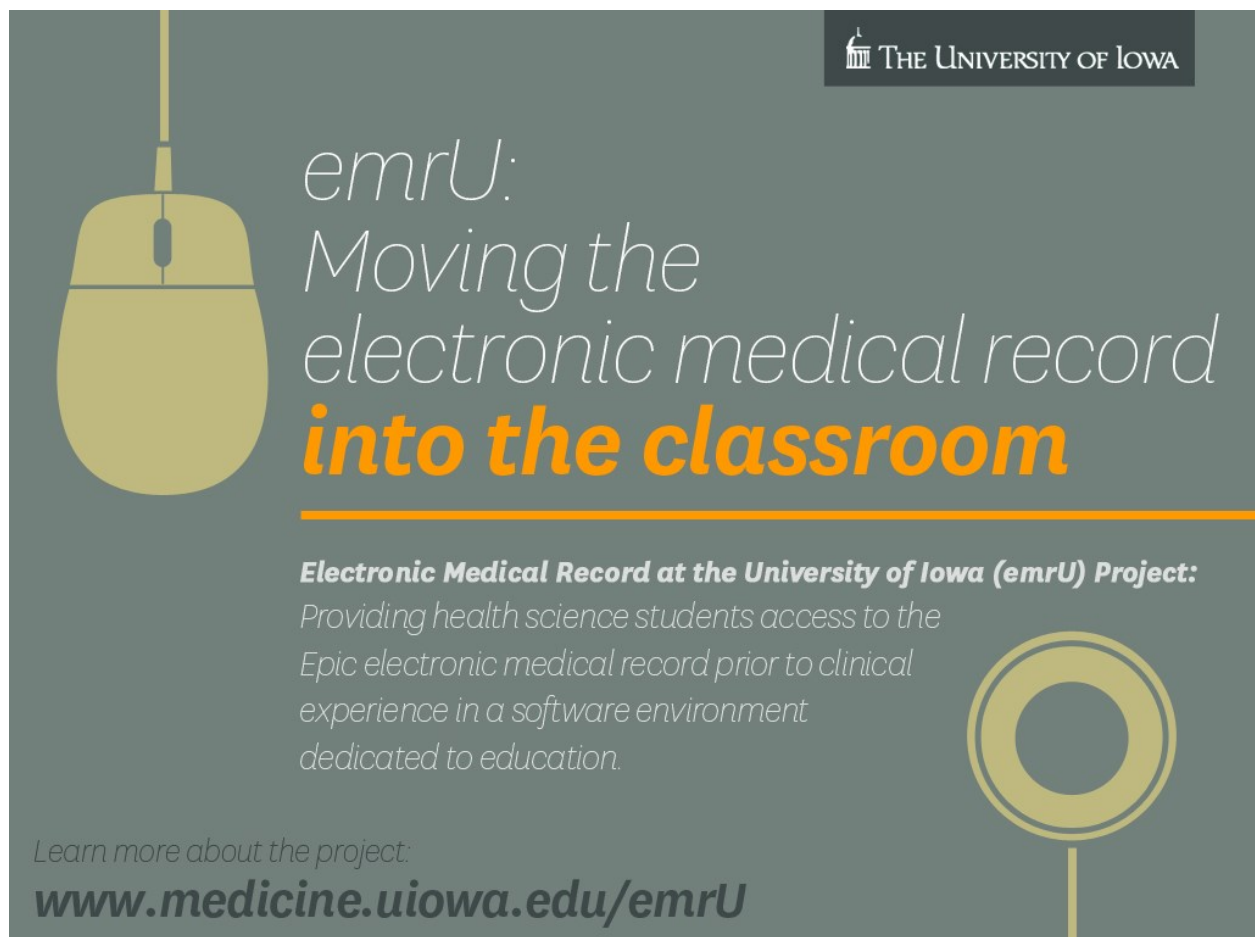
Thanks to Deb for making the time to speak with us. Interview was condensed and slightly edited.

Patient building season

Summer is here and that means it's time to build patients! We tend to be the busiest during the summer and winter months just before the semester starts—June through August & November, December, and January. Start building your patient today, [contact Nick May](#) and beat the rush!

emrU digital sign

Look for this digital sign featuring emrU on computer monitors in hallways within UIHC, the Carver College of Medicine and The College of Nursing.



THE UNIVERSITY OF IOWA

emrU:
Moving the
electronic medical record
into the classroom

Electronic Medical Record at the University of Iowa (emrU) Project:
*Providing health science students access to the
Epic electronic medical record prior to clinical
experience in a software environment
dedicated to education.*

Learn more about the project:
www.medicine.uiowa.edu/emrU