

Office of Consultation and Research
in Medical Education
(OCRME)

Activities
2019



Jane L. Miller, Ph.D., Director
1-204 Medical Education Building
Iowa City, IA 52242-1000
Phone: (319) 335-8901
FAX: (319) 335-8904
<https://medicine.uiowa.edu/ocrme/>

Mission

OCRME links research with educational practice through its work with faculty, staff, and students. We apply proven knowledge and technology in order to produce innovative education within the limits of available resources. We provide coordination of services and products that support curriculum development, faculty development, measurement, evaluation, and educational research. We recognize the value that each member contributes to our efforts and we strive to set an example of thoughtful application of validated methods in our own teaching and research.

Vision

To advance excellent and innovative health sciences education through application of sound evidence and development of new knowledge.

Table of Contents

Summary of Annual Report	1
Team Members 2019	3
Organizational Chart	4
Curriculum Development	5
Curriculum Development Projects.....	5
Teaching Skills Development and Faculty Development	7
Programs	7
Medical Education Degree and Certificate Programs.....	9
Workshops and Presentations on Teaching Skills and Scholarship	10
Research, Measurement, and Evaluation	13
Research, Measurement, and Evaluation Projects	13
Computer-Based Testing	18
Research and Scholarly Presentations	20
Publications	21
Service to the College, University, and Academia	24
Committee Membership	24
Teaching in College of Medicine and Other Courses.....	25
Professional Organizations	27

Summary of Annual Report

The Office of Consultation and Research in Medical Education (OCRME) aids those involved in teaching and education throughout the College of Medicine by providing support for curriculum development, faculty development and educational research. OCRME consultants provide individual consultations, serve as project staff, conduct workshops and assist in preparing grant proposals. Consultants also engage in their own research and scholarly activities.

From January 1 to December 31, 2019, OCRME personnel

- Supported the College through over 100 projects and programs in curriculum development, faculty development, measurement, evaluation and research.
- Supported 5 externally funded projects.
- Supported test development and administration for 31 courses, clerkships and programs.
- Conducted or sponsored over 25 workshops, seminars and presentations attended by over 400 on-campus and community faculty members, residents and staff.
- Continued to conduct the Medical Education Degree Program and the Medical Education Certificate.
- Gave 9 oral and poster presentations and 6 workshops at regional, national or international conferences.
- Authored or co-authored 18 peer-reviewed publications.
- Reviewers for several peer-reviewed journals, conference proposals for the Association of American Medical Colleges and other professional organizations, and submissions to MedEdPORTAL.
- Served on numerous College, University and professional committees.

Team Members 2019

Patrick Barlow, Ph.D., Assistant Professor, Internal Medicine, Program Evaluation

Stephanie Burnett, B.A., Secretary III

Dan Johnsen, B.S., Senior Application Developer, Computer-Based Instruction¹

Clarence (Clare) Kreiter, Ph.D., Professor, Family Medicine, Statistics and Measurement

Donna Lancianese, Ph.D., Program Coordinator, Program Evaluation and Research

Nathan Lothamer, B.A., Instructional Services Specialist, Curriculum Support¹

Susan Lenocho, M.A., Instructional Services Manager, Instructional Design

Robyn Miessler-Kubanek, B.A., Administrative Services Coordinator

Jane L. Miller, Ph.D., Director and Associate Professor, Family Medicine

Jeff Pettit, Ph.D., Associate Director and Associate Professor, Family Medicine, Education

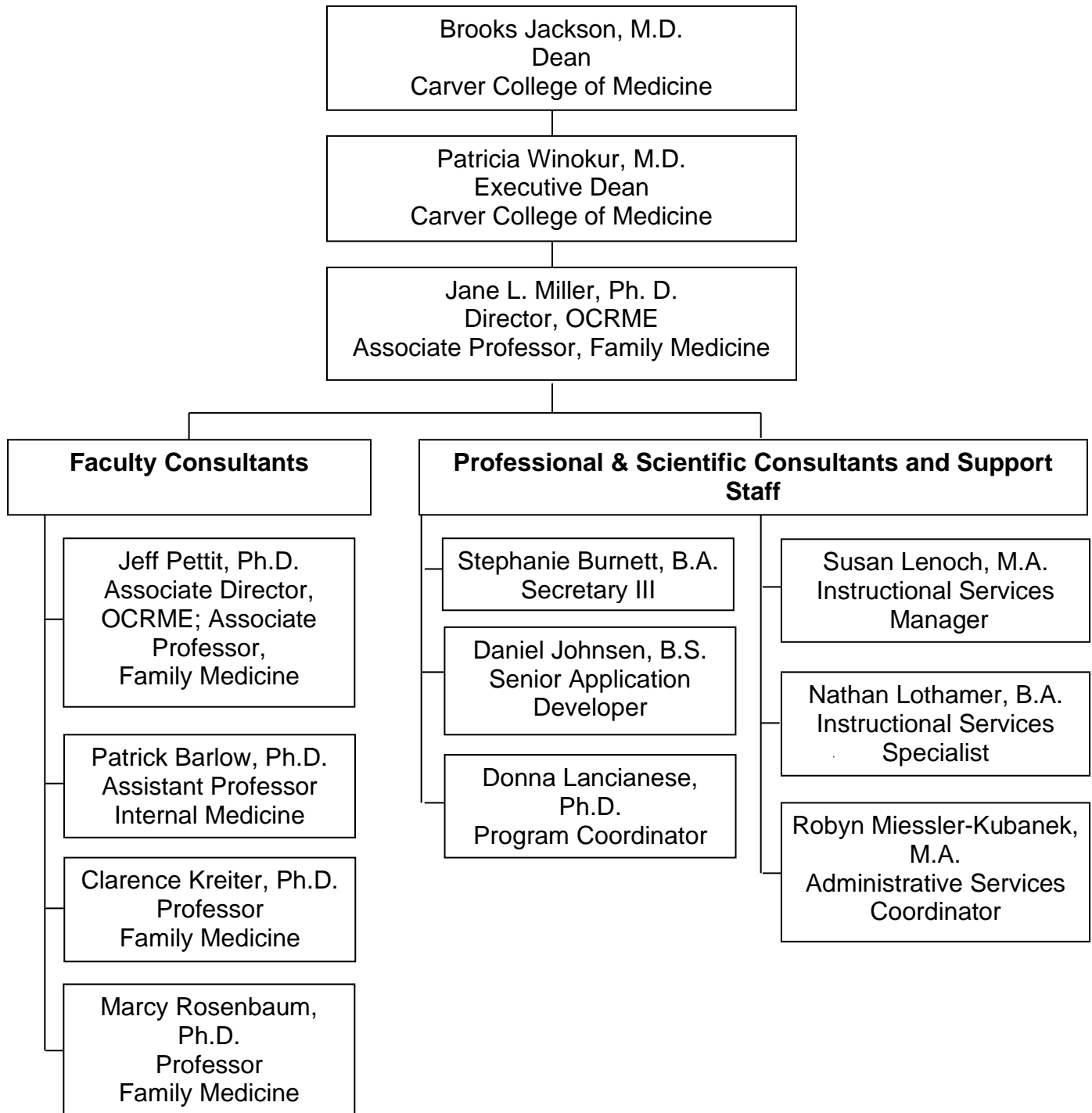
Marcy Rosenbaum, Ph.D., Professor, Family Medicine, Faculty Development

Sahai Family Professorship of Medical Education Recipient

¹Transferred to CCOM IT Department

Organizational Chart 2019

Office of Consultation and Research in Medical Education (OCRME)



Curriculum Development

OCRME assists faculty and staff to design, develop, implement and evaluate curricula, academic programs and instructional methods, including computer-based applications. We help develop support systems for course evaluation.

During 2019, OCRME staff

- Participated in 17 curriculum development projects involving faculty and staff from several departments and offices. The table below lists these projects. See also the Research and Evaluation section for projects focused on evaluating curricula.
- Provided over 30 less intensive consultations related to curriculum development and evaluation. Examples of these consultations include assistance with
 - Developing communication curriculum;
 - Exam improvements;
 - Providing resources on large-group instruction;
 - Technology solutions, such as formatting student laptops for computer-based testing.
- Served on several education-related committees. (See the section on Service.)

Curriculum Development Projects

Project	Collaborators	OCRME Consultants
Curriculum Repository		Nathan Lothamer
Google Analytics for Curriculum Repository		Nathan Lothamer
Exemplars on the Curriculum Repository	Strand Directors, Office of Student Affairs and Curriculum (OSAC)	Nathan Lothamer
Clinical Transitions: Difficult Conversation Sessions	Tony Brenneman, Physician's Assistant Program	Marcy Rosenbaum
SCM: Virtual Case Management	DeeDee Stafford, Internal Medicine	Daniel Johnsen
Learning Module Development Model	Shannon Manley, Carver College of Medicine	Daniel Johnsen
Leadership for Future Physicians	Brooks Obr, Emergency Medicine; Megan McVancel, Office of Student Affairs and Curriculum (OSAC)	Jeff Pettit
Developing a Comprehensive Communication Skills Curriculum	Clinical and Professional Skills Directors	Marcy Rosenbaum
Redesigning SP-Based Exams	Ellen Franklin, Performance-Based Assessment Program	Clare Kreiter

Project	Collaborators	OCRME Consultants
Arts and Medicine Electives	Jason Lewis, Office of Student Affairs and Curriculum (OSAC); Alan MacVey, Theatre Department; David Gier, Music Department	Marcy Rosenbaum
UIHC Physician Communication Workshops	Jonathan Bothell, Director of Office of Patient Experience	Marcy Rosenbaum
Teaching Skills Modules	Graduate Medical Education (GME) Office	Jeff Pettit, Marcy Rosenbaum, Nathan Lothamer, Daniel Johnsen
Objective Structured Clinical Exam	Tony Brenneman, Physician Assistant Program	Daniel Johnsen
Automatic Short Answer Scoring of IVOSCEs	Fred Dee, Thomas Haugen, Leslie Bruch, John Blau, Pathology	Nathan Lothamer
Upgrading the Medical Curriculum Repository	Office of Student Affairs and Curriculum (OSAC)	Nathan Lothamer
Integrated Instruction of Surface Anatomy and Massage Therapy	Darren Hoffmann, Anatomy; Dede Dancing, Licensed Massage Therapist	Marcy Rosenbaum
Analysis and Scoring of SP Data	Ellen Franklin, Performance-Based Assessment Program	Clare Kreiter

Teaching Skills Development and Faculty Development

OCRME assists faculty and others to develop their teaching skills through workshops, self-instructional programs and individual consultations. We also assist departments to implement and evaluate their faculty development programs.

In 2019, OCRME

- Continued the Medical Education Degree and Certificate programs with enrollment of 25.
- Continued a 4-week elective course on teaching methods completed by 44 fourth-year medical students.
- Held 5 training sessions for 14 on-campus Teaching Scholars.
- Provided training for 16 Community Teaching Scholars.
- Conducted 29 training sessions attended by over 300 faculty members on campus.
- Conducted 7 workshops on teaching or leadership skills attended by over 100 residents.
- Advised 19 individuals on teaching, leadership or giving feedback.

Programs

Program	Collaborators	OCRME Consultants
<i>Faculty and the College at Large</i>		
Medical Education Degree	Office of the Dean	Jane L. Miller, Clare Kreiter, Marcy Rosenbaum, Jeff Pettit, Patrick Barlow, Stephanie Burnett
Teaching Scholars	Office of the Dean	Jane L. Miller, Marcy Rosenbaum, Susan Lenoach, Jeff Pettit, Stephanie Burnett
Community Teaching Scholars	Office of Statewide Clinical Education Programs (OSCEP)	Marcy Rosenbaum, Jane L. Miller, Jeff Pettit, Susan Lenoach
Skills for Educators Workshops		Jane L. Miller, Marcy Rosenbaum, Susan Lenoach, Jeff Pettit, Patrick Barlow, Stephanie Burnett
Certificate Program in Educational Leadership	Mark Wilson, GME Office	Jeff Pettit
TeamSTEPPS in Family Medicine	Wendy Shen, Family Medicine	Jeff Pettit

Program	Collaborators	OCRME Consultants
Team-Based Simulation Design and Debriefing Workshops	Paul Leonard, Anesthesia; Thomas Persoon, Operational Improvement; Thomas Collins, Transplant Surgery	Jane L. Miller, Jeff Pettit
Team Development	Dave Clark, Palliative Care Team	Jeff Pettit
Family Medicine Mentoring Program	Kelly Skelly, Family Medicine	Jeff Pettit
Des Moines Teaching Scholars Program	Steve Craig, Des Moines Branch Campus	Marcy Rosenbaum, Jeff Pettit
Strengths Finder Training	Palliative Care; OSCEP; Healthcare Information Systems	Jeff Pettit
Practice Management: Leadership Training	Family Medicine	Jeff Pettit
Faculty and Fellows as Clinical Educators (FACE) Program	Krista Johnson, Manish Suneja, Internal Medicine	Marcy Rosenbaum
Faculty Development for Hematology/Oncology Faculty	Daniel Berg, Najla Itani, Internal Medicine	Marcy Rosenbaum
<i>Residents, Fellows, and Students</i>		
Rising Chief Resident Leadership Symposium	Mark Wilson, GME Office	Jeff Pettit
Chief Resident Leadership Development Program	Mark Wilson, GME Office	Jeff Pettit
New Resident/Fellow Orientation	Mark Wilson, GME Office	Jeff Pettit
Teaching Skills for Medical Students		Jeff Pettit
Teaching Distinction Track	Hugh Hansen, Carrie Bernat, OSAC	Jeff Pettit
Teaching Session for Internal Medicine Residents	Jane Rowat, Krista Johnson, Katie White, Manish Suneja, Internal Medicine	Marcy Rosenbaum, Jeff Pettit
<i>National and International</i>		
International Network of Teachers of Medical Interviewing	International Association for Communication in Healthcare	Marcy Rosenbaum
Pairing with Colleagues Program Website	International Conference on Communication in Healthcare	Daniel Johnsen, Marcy Rosenbaum
Chief Resident Leadership Development, South Carolina	Renee Connolly, Palmetto Health System, Charleston, SC	Jeff Pettit
Chief Resident Leadership Development Program, Qatar	Carma Bylund-Lincoln, Hamad Medical Corporation, Doha, Qatar	Jeff Pettit

Program	Collaborators	OCRME Consultants
Communication Teaching Training the Trainers Program for Austria	Marlene Sator, Gesundheit Osterreich GmbH (GOG); Institute for Health Promotion and Prevention (IfGP), Vienna, Austria	Marcy Rosenbaum

Medical Education Degree and Certificate Programs

*25 faculty participants and staff were enrolled in these programs with 9 graduates in 2019.
The following is a list of courses that we offer and the course directors.*

MED:9701	Instructional Design and Technology, Jeff Pettit
MED:9702	Clinical Teaching in Medical Education, Marcy Rosenbaum
MED:9703	Educational Research and Evaluation, Patrick Barlow
MED:9711	Teaching Methods in Medical Education, Marcy Rosenbaum
MED:9712	Introduction to Educational Measurement, Clarence Kreiter
MED:9713	Assessment in Medical Education, Clarence Kreiter
MED:9714	Current Issues in Medical Education, Jane L. Miller
MED:9720	Portfolio, Marcy Rosenbaum, Jane L. Miller
MED:9721	Study in Faculty Development, Marcy Rosenbaum
MED:9722	Independent Study, Jane L. Miller
MED:9724	Leadership in Medicine, Jeff Pettit
MED:9725	Simulation in Medical Education, Patrick Barlow
MED:9726	Curriculum Development in Medical Education, Jeff Pettit
MED:9727	Teaching and Assessing Communication Skills in Medical Education, Marcy Rosenbaum

Workshops and Presentations on Teaching Skills and Scholarship

Workshops and Presentations Primarily for Faculty

Teaching Scholars Program. Training sessions for program participants.

Orienting and Priming Learners, September 20, Jeff Pettit, Jane L. Miller.

Feedback, October 18, Jeff Pettit.

Observing Learners, October 18, Marcy Rosenbaum.

Good, Bad, Ugly of Teaching, November 15, Marcy Rosenbaum.

Interprofessional Education, November 15, Jane L. Miller.

Community Teaching Scholars Program Workshops. Training sessions for program participants.

Efficient Clinical Teaching, March 8.

Interprofessional Collaboration and Education, August 29.

Generational Differences, December 5.

Implicit Bias, December 5, David Moser.

STFM New Faculty Orientation, December 5, Kate Thoma.

Skills for Educators Workshops, monthly skills workshops for faculty and staff.

How to Design Instruction, January 8, Susan Leno.

Teaching Clinical Reasoning, February 15, Manish Suneja.

Scholarship and Research, March 15, Marcy Rosenbaum, Patrick Barlow.

Interactive Lecturing, September 5, Marcy Rosenbaum.

Effective Feedback, October 17, Jeff Pettit.

Clinical Teaching, November 21, Marcy Rosenbaum, Kelly Skelly.

Dermatology

Grand Rounds: Patient-Center Care, August 15, Marcy Rosenbaum.

Family Medicine

Developing Educational Research for MedEdPORTAL: Parts I and II,

August 7, Jane L. Miller, Marcy Rosenbaum.

Introduction to MedEdPORTAL, September 4, Marcy Rosenbaum, Jane L. Miller.

Pediatrics Palliative Care Team

Developing Trust, September 25, Jeff Pettit.

Surgery

Mentoring, January 14, Jeff Pettit.

Workshop for the Clinical Experiences Committee, Jeff Pettit.

Conflict Management, January 16.

Motivation 3.0, October 2.

OCRME, February 21. Presentation for the New Faculty Orientation, Jeff Pettit.

Leadership & How to Develop These Skills, February 21. Presentation for Des Moines faculty, Jeff Pettit.

Team Simulation Design & Development Workshop, workshop for UIHC faculty.
April 9-10, co-facilitator, Jeff Pettit.
October 14-16, co-facilitator, Jane L. Miller.

Medical Emergency during Flight, April 25. Team building workshop for QI/SP course, Jeff Pettit.

Educational Scholarship, June 25. Workshop for BNGAP Health-Related Academic Career Development Conference for College/Post-Bacc Trainees. University of Iowa Carver College of Medicine, Marcy Rosenbaum, Daniel Runde.

Workshops and Presentations for Residents and Fellows

Family Medicine

Team Building, January 18, Jeff Pettit.

Internal Medicine Residents

Effective Feedback, April 11, Marcy Rosenbaum.

Provider Communication Training for Resident Physicians in Internal Medicine, November 1, December 5, 12, 19, Marcy Rosenbaum (Coordinator, Facilitator, and Team Leader).

Rising Chief Resident Leadership Symposium, March 19. Facilitated for the GME office, Jeff Pettit.

Regional, National and International Workshops

Challenging Situations in Communication Teaching, May 11. Workshop at the University of Antwerp, Antwerp, Belgium, Silverman, J., Rosenbaum, M.

Experiential Communication Skills Teaching Workshop, May 13. Workshop at the University of Antwerp, Antwerp, Belgium, Rosenbaum, M., Kinnersley, P.

Difficult Teacher Learner Interactions, September 5. Workshop for the Des Moines Educational Consortium, Iowa City, IA, Rosenbaum, M.

Using Observation and Feedback in Teaching Communication with Real Patients in the Clinical Setting, September 17-18. Workshop presented at the EACH Forum on Healthcare Communication, Leiden, NL, Rosenbaum, M., Silverman, J.

Curriculum Development in Communication in Healthcare, October 26-27. Invited pre-conference course for International Conference on Communication in Healthcare, San Diego, CA, Rosenbaum, M., Ege Moller, J., van Weel-Baumgarten, E.

Missed Opportunities in Workplace-Based Learning: Approaches to Teaching Communication in the Context of Clinical Practice, October 29. Workshop presented at the International Conference on Communication in Healthcare, San Diego, CA, Rosenbaum, M., Kapadia, M, Ege Moller, J.

Faculty/Fellows Mentoring

Patrick Barlow: George Bergus, Lauris Kaldjian, Heather Reisinger

Marcy Rosenbaum: Kate Robb, Aaron Kunz, Brigit Ray, Usha Perepu, Erin Howe

Collaborators

The following faculty members and staff assisted in our faculty development efforts by teaching portions of workshops and seminars on campus or at statewide sites.

David Moser

Teaching Scholars

Kelly Skelly

Manish Suneja

MME Students/Graduates

Daniel Runde

Kate Thomas

Research, Measurement and Evaluation

OCRME consultants work with faculty on education and health care research projects. We help faculty develop methods to measure knowledge and performance and to analyze and interpret measurement information. We provide ongoing support for computer-based testing and performance-based assessment.

During 2019, OCRME consultants

- Participated in 60 research and evaluation projects. The table below and on the following pages lists these projects.
- Supported test development and administration for 30 courses, clerkships and other programs.
- Authored or co-authored 18 peer-reviewed publications. (See Publications.)
- In addition to the projects below, provided over 15 brief consultations in which OCRME consultants supported individuals to explore research projects, develop survey instruments, assist with data analysis, and produce educational scholarship.

Research, Measurement, and Evaluation Projects

Project	Collaborators	OCRME Consultants
<i>Undergraduate Health Sciences Education</i>		
LCME Briefing Book	Chris Cooper, Office of Student Affairs and Curriculum (OSAC)	Patrick Barlow, Donna Lancianese, Susan Lenoch
LCME Student Survey	Office of Student Affairs and Curriculum (OSAC)	Donna Lancianese, Susan Lenoch, Patrick Barlow
Study of Curriculum Phases	Medical Education Committee, CCOM Assessment Committee	Patrick Barlow, Donna Lancianese, Susan Lenoch
Study of Curriculum Outcomes	Medical Education Committee, CCOM Assessment Committee	Patrick Barlow, Susan Lenoch
Focus Groups on Student Advising and Counseling	Office of Student Affairs and Curriculum (OSAC)	Donna Lancianese, Patrick Barlow, Susan Lenoch
Revision of Clerkship Evaluation Forms	CCOM Clinical Experiences Committee	Susan Lenoch, Patrick Barlow, Donna Lancianese
Student Perspectives on Methods for Giving Feedback	Lauren Peters, UI Department of Communication	Marcy Rosenbaum, Patrick Barlow, Susan Lenoch, Donna Lancianese, Jane L. Miller
Massage and Physical Examination Skill Learning	Darren Hoffman, Anatomy	Marcy Rosenbaum
Comparison of Campuses	Medical Education Council, Clinical Experiences Committee	Donna Lancianese, Patrick Barlow, Susan Lenoch

Project	Collaborators	OCRME Consultants
Learning Environment with Regard to Professionalism and Mistreatment	Medical Education Council	Donna Lancianese, Susan Lenoch, Patrick Barlow
Study of Mid-Clerkship Feedback	Clinical Experiences Committee	Patrick Barlow, Donna Lancianese, Susan Lenoch
Admission Scores and Interviewers: 2015-2019	CCOM Office of Admissions	Donna Lancianese
Needs Assessment of the “Dashboard”	David Calvert, Duane Staskal, CCOM Information Technologies	Donna Lancianese, Patrick Barlow
LCME Progress Report	Office of Student Affairs and Curriculum (OSAC)	Susan Lenoch, Donna Lancianese, Patrick Barlow
Outcomes Evaluation of the Revised Liaison Committee Experience for CCOM Preclinical Courses	Kasra Zarei, Graduate Fellow	Patrick Barlow, Donna Lancianese
Prevalence and Impact of Medical Scribe Experiences on Subsequent Medical Student Learning	Kelly Skelly, Family Medicine	Marcy Rosenbaum
Preparing Student Liaison Committee Evaluations	Medical Arts and Science Committee	Patrick Barlow
ICON Standardization of Clerkship Sites	Catherine Chavez, Pediatrics; Sally Fisher, OBGyn; Catherine Unruh, Surgery; Dana Hartman, Internal Medicine	Patrick Barlow, Donna Lancianese
Early Clinical Experiences Evaluation Project	Tony Brenneman, PA Program, Amal Shibli-Rahhal, Internal Medicine, Carrie Bernat, Megan McDowell, OSAC	Marcy Rosenbaum
Meta-Analytic Review of the Use of Subjective Assessment in Admission		Clare Kreiter
Opportunities for Teaching Communication During Clinical Clerkships	Katie White, Internal Medicine; Nicoll Manhica, Medical Student	Marcy Rosenbaum, Patrick Barlow
Scale Development for Measuring “Ageism” in Dental Students	Leo Marchini, Ryan Rucker, UI College of Dentistry; Anastasia Kossioni, University of Athens, Greece	Patrick Barlow
Scale Development for Measuring Student Perceptions of Learning Environments in Dental Students	Leo Marchini, Ryan Rucker, UI College of Dentistry; Anastasia Kossioni, University of Athens, Greece	Patrick Barlow
Integrated Instruction of Surface Anatomy and Massage Therapy	Darren Hoffmann, Anatomy and Cell Biology; Dede Dancing Licensed Massage Therapist	Marcy Rosenbaum

Project	Collaborators	OCRME Consultants
Medical Student Career Trajectory	Jerrod Keith, Plastic and Reconstructive Surgery	Patrick Barlow
Medical Education Monitoring and Evaluation (MEME)	Medical Education Council, OSAC	Patrick Barlow, Susan Lench, Donna Lancianese
Evaluation of the UI Summer Health Professions Education Program (SHPEP)	Denise Martinez, Family Medicine; Michelle McQuistan, UI College of Dentistry; Tanya Uden-Holman, UI College of Public Health; Richard Barajas, UI College of Pharmacy; Asih Asikin-Garmager, UI College of Education	Patrick Barlow
<i>Clinical Teaching and Graduate Medical Education</i>		
Internal Medicine and Surgery Resident Interactions	Muneera Kapadia, Surgery; Manish Suneja, Internal Medicine; Christoffer Amdahl, Medical Student; Office of Student Affairs and Curriculum (OSAC)	Marcy Rosenbaum
Urology Communication Literature Review	Kathy Kieran, University of Washington	Marcy Rosenbaum
Residency Training Program in Primary Care	Kate Thoma, George Bergus, Family Medicine	Patrick Barlow
Communication Skills Teaching in Surgery Residency Programs	Muneera Kapadia, Surgery	Marcy Rosenbaum
Impact of Work Hours on Resident-Faculty Interactions	Kristin Gerjevic, Dartmouth; Manish Suneja, Internal Medicine	Marcy Rosenbaum
Milestone Evaluations in Family Medicine, Pediatrics, and Internal Medicine	Kate Thoma, Family Medicine; Eyad Hanna, Pediatrics; Manish Suneja, Internal Medicine	Patrick Barlow
Resident Autonomy Study	Cameron Crockett, Medical Student; Manish Suneja, Internal Medicine; Charuta Joshi, Children's Hospital, CO	Marcy Rosenbaum
Educational Environment Study	Peter Daniolos, Erin Martin, Child & Adolescent Psychiatry	Jeff Pettit
Pediatric Resident Burnout Prevention	Catherine Pinnaro, Stephanie Houston, Amy Stier, Pediatrics	Patrick Barlow
Emergency Medicine Resident Burnout Prevention	Emma Nash, Dan Runde, Emergency Medicine	Patrick Barlow
Internal Medicine Resident Applicant Personal Statements	Manish Suneja, Bharat Kumar, Internal Medicine	Patrick Barlow, Donna Lancianese

Project	Collaborators	OCRME Consultants
Emergency Medicine Resident Teaching Time Perceptions	Brooks Obr, Dan Runde, Emergency Medicine	Patrick Barlow
Electronic Medical Record Communication	Kelly Skelly, Family Medicine	Marcy Rosenbaum
Communication Training in Postgraduate Medicine	Carma Bylund, University of Florida	Marcy Rosenbaum
<i>Measurement Research</i>		
Adaptive Simulation of Communication Skills	Teresa Pawlikowska, Catherine Bruen, Royal College of Surgeons in Ireland, Dublin	Clare Kreiter
Evaluating Multi-Campus Admission Interviews	Terry Straton, University of Kentucky	Clare Kreiter
<i>Faculty and Professional Development</i>		
Training Grant-Developmental Disabilities (ILEND) ¹	Lenore Holt, Speech Pathology	Marcy Rosenbaum
Obtaining Measures of Supervisory Skills in Clinical Practice	Brad Hindman, Franklin Dexter, Anesthesia	Clare Kreiter
Qualitative Analysis-Daily Evaluation Faculty Feedback	Michael Murrell, Michelle Krupp, College of Dentistry	Patrick Barlow, Donna Lancianese
Dentistry Faculty Professional Development Needs	Michelle Krupp, College of Dentistry	Patrick Barlow
Impact of Communication Skills Training on Orthopedic Surgeons	Brendan Patterson, Olivia O'Reilly, Orthopedics	Marcy Rosenbaum
Evaluation of the Pairing with Colleagues Program	Christoffer Amdahl, Medical Student; Office of Student Affairs and Curriculum (OSAC)	Marcy Rosenbaum, Daniel Johnsen
<i>Healthcare Quality and Population Health</i>		
Needs Assessment of I-CART Users	Boyd Knosp, CCOM Dean's Office; ICTS	Patrick Barlow
Communication during Pre-Operative and Post-Operative Conversations with Families	Munee Kapadia, Paige Zhou, Surgery	Marcy Rosenbaum
Evaluating the UI Health Care CultureVision Initiative	Sherree Wilson, Denise Martinez, Office of Cultural Affairs and Diversity	Patrick Barlow
LVAD Patient Review Survey	Kaitlyn Dubishar, UI Heart & Vascular Center	Patrick Barlow

¹Funded by external grants

Project	Collaborators	OCRME Consultants
Evaluation of Contraceptive Education Intervention at the Iowa City Shelter House	Marielle Maurice, Lindsay Goad, Medical Students; Abbey Hardy-Fairbanks, OB/Gyn	Patrick Barlow
Evaluation of the Institute for Clinical & Translational Science (ICTS) ¹	Kanika Arora, College of Public Health; Kimberly Dukes, ICTS; Pat Winokur CCOM Administration	Patrick Barlow
SPARC2i: A Collaborative Inter-CTSA e-Commerce Marketplace for Research Services ¹	Boyd Knosp, CCOM Admin; James Schappet, Medical University of South Carolina; Nic Johnson, University of Utah; LA CaTS	Patrick Barlow
A National Center for Digital Health Informatics Innovation ¹	Dave Eichman, UI School of Library and Information Sciences; Northwestern University in partnership with Oregon Health & Science University of Washington; Johns Hopkins University School of Medicine; Sage Bionetworks; The Scripps Research Institute, Washington	Patrick Barlow
Burroughs Welcome Fund Physician-Scientist Institutional Award Planning Grant Application ¹	Jeff Murray, Nancy Davin, Beth Knudson, ICTS; Lori Adam, College of Liberal Arts & Sciences	Patrick Barlow
Needs Assessment of Homeless Individuals	Marielle Maurice, Christine Todd, Lindsay Goad, Medical Students; Anne Gaglioti, Family Medicine; Colleen Stockdale, ObGyn	Patrick Barlow
UI Mobile Museum 2018	Nancy Davin, ICTS; Beth Knudson, UI Mobile Museum; JC Gillet, Katherine Moermond, Old Capitol Museum	Patrick Barlow

¹Funded by external grants

Computer-Based Testing

OCRME staff support courses and clerkships to administer computer-based tests and provide products for test administration, item-banking and reporting. Daniel Johnsen is the developer, and along with Robyn Miessler-Kubaneck, provides logistical support. In 2019, they supported 268 examinations across 31 courses with over 11000 logins to exams, quiz modules and simulation exams. Faculty members created over 1100 new questions in ItemBanker, bringing the total number of items up to over 31800.

OCRME now provides support to 100% of courses comprising the M/PA1-M/PA2 curriculum, more than half of the M3/M4 required clerkships with the Computer-Based Testing program, several residency programs, and some College of Dentistry and Basic Sciences courses taught by CCOM faculty.

As of January 2020, Dan Johnsen has moved into the CCOM IT Application Services group and Computer Based Testing development and service management will reside in that office, moving forward.

Computerized Patient Case Simulator (PCS) Examinations in 2019

Internal Medicine Inpatient Clerkship; Lisa Antes and Lee Sanders, Internal Medicine

OCRME Supported Examinations in 2019

Anesthesia Clerkship; James Choi, Sapna Ravindranath, Anesthesia

CAPS I; Anthony Brenneman, Physician Assistant Program

CAPS I OSCE Exam; Anthony Brenneman, Physician Assistant Program

CAPS II; Daniel Runde, Emergency Medicine

CAPS III; Antonio Sanchez, Internal Medicine

CAPS III OSCE Exam; Antonio Sanchez, Internal Medicine

Dermatology Clerkship; Vincent Liu, Dermatology

Foundations of Cellular Life; Darren Hoffman, Nathan Swailes, Anatomy and Cell Biology

Functional Neuroanatomy for Basic Science Graduate Students; Justin Sipla, Anatomy and Cell Biology

General Histology Online for Master in Anatomy Program Students; Nathan Swailes, Anatomy and Cell Biology

GRISTO for Dental Students; Darren Hoffman, Nathan Swailes, Anatomy and Cell Biology

Human Physiology Exam for Dental and Graduate Students; Wayne Johnson, Molecular Physiology and Biophysics

Internal Medicine Inpatient Clerkship; Lisa Antes and Lee Sanders, Internal Medicine

Introduction to Medical Education; Carrie Bernat, Office of Student Affairs and Curriculum

MOHD I; Sarat Kuppachi, Internal Medicine; Andrew Russo, Physiology

MOHD II; Jon Houtman, Microbiology; Justin Sipla, Anatomy and Cell Biology
MOHD III; Matthew Krasowski, Pathology; Thomas Schmidt, Physiology
MOHD IV; Barry Kasson, Pharmacology; DeeDee Stafford, Internal Medicine
MOHD Keystone; Jason Barker, Internal Medicine; Daniel Weeks, Biochemistry
MAS I; Aaron Kunz, Family Medicine
MAS II; Christopher Buresh, Emergency Medicine; Brittany Bettendorf, Internal Medicine
MAS III; Eric Epping, Internal Medicine
Medical Gross Anatomy; Marc Pizzimenti, Anatomy and Cell Biology
Neurology Clerkship; Tracey Cho, Neurology
Ophthalmology Clerkship; Pavlina Kemp, Ophthalmology
Orthopaedics Clerkship; Charles Clark, Jose Morcuende, Orthopaedic Surgery
Otolaryngology Clerkship; Jose Manaligod, Otolaryngology
Physician Assistant; Theresa Hegmann, Physician Assistant Program
Residents-Internal Medicine; Justin Smock, Internal Medicine
Residents-Pathology (Blood Bank); Annette Schlueter, Michael Knudson, Pathology
Residents-Pathology (Chemistry); Matthew Krasowski, Pathology
Residents-Pathology (Microbiology); Bradley Ford, Pathology
Urology Clerkship; Chad Tracy, Urology

OCRME Test Development and Administration Products

ItemBanker allows developers to create a secure database of exam questions that they can easily edit and select in order to prepare paper or computer-based exams. The program performs item analysis in order to improve exam performance and reliability. The historical performance of the items is then available for future use in exam construction.

Module Viewer is a test delivery system designed for administering on-line exams.

Module Maker is an on-line tool used to administer tests created in ItemBanker for Module Viewer.

Patient Case Simulator (PCS) is a software application used to test clinical reasoning skills by presenting a screen-based patient simulation. The software allows faculty to create their own customized case encounters and scoring rubric for assessment.

Virtual Comment Book (VCB) is a software application used to allow students the ability to access their incorrect answers immediately after submitting their exam and provide challenges and feedback to their exam items.

Iowa Exam Browser (IEB) is a test-security software application that launches prior to exam login and can disable a list of instant messaging, screen capture, web browsing, email and other potentially insecure computer applications during the exam period.

Variable Exam Administration formats include high-stakes large group (170+), flexible schedule (multi-day, multi-location), and OSCE-style multi-station mini-exams.

Research and Scholarly Presentations

Development of a Communication Skills Curriculum for Surgical Residents, May 10. Presentation for the Graduate Medical Education Annual Leadership Symposium, Iowa City, IA, Kapadia, M.R., **Rosenbaum, M.**

The Meaning of 'Service over Education' to Emergency Medicine Residents, May 10. Poster presented at the Graduate Medical Education Annual Leadership Symposium, Iowa City, IA, Obr, B., Runde, D., Takacs, M., **Barlow, P.B.**

Basics of Scholarship, June 8. Presentation at the Association of Standardized Patient Educators Annual Meeting, Orlando, FL, **Miller, J.L.**, Clark, L.

Claiming Your Place as a Leader: How to Talk about Who You Are, What You Do, and What You Know, June 8. Presentation at the Association of Standardized Patient Educators Annual Meeting, Orlando, FL, **Miller, J.L.**

Implementing Simulations with Interpreters: Essential Knowledge, Skills and Resources for SP Educators, June 8. Presentation at the Association of Standardized Patient Educators Annual Meeting, Orlando, FL, **Miller, J.L.**, Woll, A., Quick, K.

A Scoping Review Examining the Validity of Medical School Grades, September 18. Poster presented for Carver College of Medicine Student Research Day, Iowa City, IA, Platti, N., **Kreiter, C.**, Healy, H.

Evaluation of the ICCH Pairing with Colleagues Program, October 29. Poster presented at the International Conference on Communication and Healthcare, San Diego, CA, Amdahl, C., Johnsen, D., Sommer, J., Silverman, J., Karnielli-Miller, O., Jirasivijinda, T., **Rosenbaum, M.**

A Case Study of Successes and Setbacks Using the Common Metrics to Support Institutional Change, November 11. Oral presentation at the American Evaluation Association Annual Meeting, Minneapolis, MN, **Barlow, P.B.**

A Qualitative Study of Student Self-Assessments of Clinical Competency: Evaluating Preparedness and Growth, November 11. Oral Presentation at the American Evaluation Association Annual Meeting, Minneapolis, MN, **Barlow, P.B.**, Humble, R.

Publications

- Anwar, T., Cooper, C.S., Lockwood, G., **Ferguson, K.J., Barlow, P.B.**, Storm, D.W. Assessment and Validation of a Screening Questionnaire for the Diagnosis of Pediatric Bladder and Bowel Dysfunction. *Journal of Pediatric Urology*, 15(5):528, October 2019.
- Bruen, C., **Kreiter, C.**, Pawlikowska, T. Automated Scoring of an Interview Assessment. *Medical Education Online*, In Press 2019.
- Crockett, C., Joshi, C., **Rosenbaum, M.**, Suneja, M. Learning to Drive: Resident Physicians' Perceptions of How Attending Physicians Promote and Undermine Autonomy. *BMC Medical Education*, 17:124-132, 2019.
- Ferguson, K.J., **Kreiter, C.D.**, Franklin, E., Haugen, T.H., Dee, F.R. Investigating the Validity of Web-Enabled Mechanistic Case Diagramming Scores to Assess Students' Integration of Foundational and Clinical Sciences. *Advances in Health Sciences Education*, <https://doi.org/10.1007/s10459-019-09944-7>, November 13, 2019.
- Hoffman, D.S., Dancing, D., **Rosenbaum, M.** Massage and Medicine: An Interprofessional Approach to Learning Musculoskeletal Anatomy and Enhancing Personal Wellness. *Academic Medicine*, 94(6):885-92, June 2019.
- Kossioni, A.E., Ioannidou, K., Kalyva, D., Marchini, L., Hartshorn, J., Kaufman, L., Smith, B., **Barlow, P.B.** Translation and Validation of the Greek Version of an Ageism Scale for Dental Students (ASDS_Gr). *Gerodontology*, 36(3):251-7, September 1, 2019.
- Meurice, M.E., Goad, L.M., **Barlow, P.B.**, Kerestes, C.A., et. al. Efficacy-Based Contraceptive Counseling for Women Experiencing Homelessness in Iowa City, IA. *Journal of Community Health Nursing*, 36(4):199-207, October 17, 2019.
- O'Brien, M.K., Dexter, F., **Kreiter, C.D.**, Slater-Scott, C., Hindman, B.J. Nurse Anesthetists' Evaluations of Anesthesiologists' Operating Room Performance are Sensitive to Anesthesiologists' years of Postgraduate Practice. *Journal of Clinical Anesthesia*, 54:102-10, 2019.
- Quick, K., Selameab, T., Woll, A., **Miller, J.** Working with Spoken Language Interpreters-A Skills Based Training for Oral Health Professional Students. *Journal of Dental Education*, 83(6):645-53, June 2019.
- Rubinelli, S., Silverman, J., Aelbrechet, K., Deveugelee, M., Finset, A., Humphris, G., Martin, P., **Rosenbaum, M.**, Van Dulmen, S., van Weel Baumgarten, E. Developing the International Association for Communication in Healthcare (EACH) to address Current Challenges of Health Communication. *Patient Education and Counseling*, 102(6):1217-21, June 2019.
- Rucker, R., **Barlow, P.B.**, Hartshorn, J., Kaufman, L., et. al. Dual Institution Validation of an Ageism Scale for Dental Students. *Special Care in Dentistry*, 39(1):28-33, January 1, 2019.

Sahker, E., Jones, D., **Lancianese, D.A.**, Pro, G., Arndt, S. Racial/Ethnic Differences in Alcohol and Drug Use Outcomes following Screening, Brief Intervention, and Referral to Treatment (SBIRT) in Federally Qualified Health Centers. *Journal of Racial and Ethnic Health Disparities*, 6:1192-9, <https://doi.org/10.1007/s40615-019-00620-w>, 2019.

Shibli-Rahhal, A., Brenneman, A., McVancel, M., **Rosenbaum, M.** A Practical Approach to Integrating Communication Skills and Early Clinical Experience into the Premedical Medical School Curriculum. *Medical Science Educator*, <https://doi.org/10.1007/s40670-019-00779-1>, July 29, 2019.

Skelly, K., **Rosenbaum, M., Barlow, P.**, Priebe, G. Comparing Resident-Patient Encounters and Case Presentations in a Family Medicine Clinic. *Medical Education*, 53(7):677-86, July 2019.

Stamy, C.D., Schwartz, C.C., Phillips, D.A., Ajarapu, A.S., **Ferguson, K.J.**, Schwinn, D.A. Time-Variable Medical Education Innovation in Context. *Advances in Medical Education and Practice*, In Press 2019.

Stratton, T., **Kreiter, C.**, Elam, C. Main and Regional Campus Assessments of Applicants to a Rural Physician Leadership Program: A Generalizability Analysis. *Journal of Regional Medical Campuses*, 1(6), doi.org/10.24926/jrmc, 2019.

Woll, A., Quick, K., Mazzei, C., Selameab, T., **Miller, J.** Working with Interpreters as a Team in Health Care (WITH Care) Simulation Curriculum Toolkit. *MedEdPORTAL*, October 2019.

Zaidi, N., **Kreiter, C.**, Hammoud, M., Steenbergh, Schiller, J., Santen, S. The Utilization of Z-Scores to Improve the Reliability of Clinical Clerkship Grades. *Academic Medicine*, In Press 2019.

Book Chapter

Miller, J., Furman, G. Development of Scenario and Training Materials. In: *Implementing Best Practices in Standardized Patient Methodology*. Gliva-McConvey, Nicholas, and Clark, eds. Springer 2019.

Technical Reports, Manuals and Other Publications

Lancianese, D. Admission Scores and Interviewers: 2015-19. Report for the CCOM, August 2019.

Lancianese, D., Barlow, P. Leno, S. 2019 Comprehensive Review of Site Comparability. Report for the CCOM, May 2019.

Lancianese, D., Barlow, P., Calvert, D., Staskal, D. Needs Assessment of the "Dashboard": Evolving Report of Stakeholder Interviews. Report for the CCOM, November 2019.

Lancianese, D., Barlow, P., Leno, S. Community-Based Primary Care Clerkship: 2019 Comprehensive Review of Site Comparability. Report for the CCOM, May 2019.

Lancianese, D., Lench, S., Barlow, P. Professionalism and Mistreatment Monitoring Report. Report for the Medical Education Monitoring and Evaluation (MEME) Committee of the Medical Education Council, September 2019.

Lancianese, D., Lench, S., Barlow, P., Hartman, D. Assessment Standards Part 1: 2019 Report on the Assessment System (9.4) and Narrative Assessment (9.5). Report for the CCOM, November 2019.

Lancianese, D., Lench, S., Barlow, P., Hartman, D. Assessment Standards Part 2: 2019 Report on Formative Assessment and Feedback (9.7) and Fair and Timely Summative Assessment (9.8). Report for the CCOM, December 2019.

Service to the College, University and Academia

Committee Membership

Academic Technologies Advisory Committee (ATAC): Patrick Barlow

Accreditation Response Work Group: Susan Lench

Center for Procedural and Surgical Skills, Executive Committee: Jane L. Miller

Clinical Experiences Committee: Jane L. Miller, Jeff Pettit (ex-officio)

Clinical and Professional Skills (CAPS) Committee: Marcy Rosenbaum

Communication Thread Director: Marcy Rosenbaum

Clinical Exam Suites Operational Review Committee: Donna Lancianese, Marcy Rosenbaum

Clinical Trials Research Office Executive Committee: Patrick Barlow

Evaluation Division: Patrick Barlow

Computer Testing/Proctoring/Space Planning Group, Campus Committee: Daniel Johnsen

Council on Teaching Charter Committee: Jeff Pettit

CultureVision Steering Committee: Patrick Barlow

Educational Support & Technology Workgroup: Jane L. Miller

End of Life Care Education Ad-Hoc: Marcy Rosenbaum

Enterprise Education Workgroup, Strategic Investment: Jane L. Miller

Family Medicine

Departmental Consulting Group: Clare Kreiter, Marcy Rosenbaum

Operations Council: Jeff Pettit

TeamSTEPPS: Jeff Pettit

Graduate Medical Education (GME) Council: Jeff Pettit

Teaching Collaborative: Jeff Pettit

ICON Collegiate Administrators Group: Stephanie Burnett, Dan Johnsen, Nathan Lothamer

Institute for Clinical and Translational Science Management Committee: Patrick Barlow

KL2 Career Development Award Study Section: Patrick Barlow

Operations Committee: Patrick Barlow

Interprofessional Education Committee: Jane L. Miller

LCME Dashboard Project Working Group: Patrick Barlow, Donna Lancianese

Mechanisms of Health and Disease Curriculum Group: Susan Lench

Medical Arts and Sciences Committee: Patrick Barlow (ex-officio), Donna Lancianese

Medical Education Council: Susan Lenocho, Jane L. Miller, Jeff Pettit
Assessment Committee: Patrick Barlow (Co-Chair), Clare Kreiter, Donna Lancianese, Susan Lenocho

Medical Education Monitoring and Evaluation (MEME) Team: Patrick Barlow (Faculty Director), Susan Lenocho, Donna Lancianese

Medicine and Society Strand Committee: Jeff Pettit

Master in Medical Education

Admissions Committee: Patrick Barlow, Clarence Kreiter, Jane L. Miller, Jeff Pettit, Marcy Rosenbaum

Portfolio Committee: Patrick Barlow, Clarence Kreiter, Jane L. Miller, Jeff Pettit, Marcy Rosenbaum

Provost's Arts Advancement across the University Initiative

Arts and Medicine Subcommittee: Marcy Rosenbaum

Support Community for Instructional Technology (SCIT): Dan Johnsen

Teaching Distinction Track Advisory Committee: Jeff Pettit

Department of Anthropology, Affiliated Faculty Member: Marcy Rosenbaum

Department of Neurosurgery, Adjunct Faculty Member: Jeff Pettit

Program in Biomedical Ethics and Medical Humanities, Affiliated Faculty Member: Marcy Rosenbaum

Teaching in College of Medicine and Other Courses

For teaching related to the Master and Certificate programs in Medical Education, see the section on Teaching Skills Development and Faculty Development.

MED:8010 Introduction to Medical Education at Iowa
Overview of Computer-Based Testing, Daniel Johnsen

MED:8121 Clinical and Professional Skills I
Introduction to the Medical Interview (lecture), Marcy Rosenbaum
Professional Communication Skills, Marcy Rosenbaum (Small Group, Substitute, and Co-Facilitator)

MED:8131 Clinical and Professional Skills II
Picking Up and Responding to Patient's Emotions (lecture), Marcy Rosenbaum
The Physical Examination as Part of the Medical Interview (lecture), Marcy Rosenbaum with William Iverson

MED:8221 Clinical and Professional Skills III
Orientation for Patient Based Clinical Reasoning, Daniel Johnsen

- MED:8320 Transition to Clerkships
Difficult Conversations with Patients and Families (lecture), Marcy Rosenbaum with Tony Brennemann (Co-Coordinator and Small Group Facilitators)
- MED:8403 Teaching Skills for Medical Students, Jeff Pettit (Course Director)
Donna Lancianese, Lecturer
- MED:8404 Advanced Teaching Skills for Medical Students, Jeff Pettit (Course Director)
- MED:8405 Leadership for Future Healthcare Professionals, Jeff Pettit (Course Director)
- CSD:6245 Pediatric Audiology
Delivering Difficult News to Parents (lecture), Marcy Rosenbaum
- MPB:8115 Human Physiology for Dental Students
Orientation for Computer Based Testing (presentation), Daniel Johnsen
- PTRS:6122 Psychosocial Aspects of Patient Care
Delivering Bad News (lecture), Marcy Rosenbaum

Clinical Methods Sessions:

Marcy Rosenbaum (Small Group Facilitator):

- IM:8301 Inpatient Medicine Clerkship, Explanation and Planning
IM:8302 Outpatient Medicine, Interview Challenges

Workshops for CCOM new student orientation.

Giving and Receiving Feedback, August 15, Jeff Pettit.

Strengths 2, August 15, Jeff Pettit.

Facilitator Training for OB/GYN Clerkship Sexual History Sessions, April 19, Marcy Rosenbaum.

In addition to advising students in the Master program, some OCRME faculty also supervise summer research projects or mentor students in one of the distinction tracks.

Supervised Student Research

Patrick Barlow: Lauren Hock, Kelsey Koch, Nicole Krois, Ryan Rucker, Kasra Zarei
Marcy Rosenbaum: Nicoll Martins-Manhica, Sanjeeva Weerasinghe

Thesis Committee

Patrick Barlow: Michelle Krupp EdD, Zhiva Zuo, PhD

Dissertation Committee

Clare Kreiter: Amirmasoud Momenipour, PhD

Professional Organizations

Membership and Leadership

Accreditation Council for Graduate Medical Education (ACGME)

Council of Public Members: Jeff Pettit (Chair Elect)

Medically Underserved Areas and/or Populations Committee: Jeff Pettit

Transitional Year Milestones 2.0 Committee: Jeff Pettit

Transition Year Residency Review Committee: Jeff Pettit

Academy for Communication and Healthcare: Marcy Rosenbaum

American Educational Research Association (AERA): Clarence Kreiter, Jane L. Miller

AERA Division I Affirmative Action Committee: Clarence Kreiter

American Evaluation Association (AEA): Patrick Barlow, Donna Lancianese

Graduate Student and New Evaluator Topical Interest Group (GSNE TIG): Patrick Barlow

Health Professions Educational Evaluation and Research (HPEER TIG): Patrick Barlow
(Organizer and Program Coordinator)

Higher Education Assessment TIG: Patrick Barlow

Multi-Paper Presentation Session, 2019 AEA Conference: Patrick Barlow (Chair)

Translational Science Evaluation TIG: Patrick Barlow

Association for Clinical and Translational Science: Patrick Barlow

Association of Standardized Patient Education (ASPE): Jane L. Miller (Associate Chair)

Association of American Medical Colleges (AAMC): Clarence Kreiter,

Susan Lenocho, Marcy Rosenbaum

AAMC Central Group on Educational Affairs: Patrick Barlow, Susan Lenocho, Jeff Pettit,

Marcy Rosenbaum

International Association for Communication in Healthcare

Executive Committee: Marcy Rosenbaum

Summer Event Planning Committee: Marcy Rosenbaum

tEACH Teaching Committee: Marcy Rosenbaum (Chair)

International Conference on Communication in Healthcare: Marcy Rosenbaum (President Elect)

Pairing with Colleagues Program: Marcy Rosenbaum (Chair)

Planning Committee for 2019: Marcy Rosenbaum (Chair)

Scientific Committee: Marcy Rosenbaum

Medical Reserve Corps, Logistics Team: Jane L. Miller

National Institute of Health, National Center for Advancing Translational Sciences

CTSA Program Evaluator's Group: Patrick Barlow

Institutional Readiness for Translational Sciences Working Group, Methods & Processes

Domain Task Force: Patrick Barlow

Society for Simulation in Healthcare: Jane L. Miller
Interprofessional Education (SIG) Executive Group: Jane L. Miller
Society of Teachers of Family Medicine: Marcy Rosenbaum

Reviewers for:

Academic Medicine: Clarence Kreiter, Marcy Rosenbaum
Advances in Health Sciences Education: Clarence Kreiter (Associate Editor)
Special Issue on Alternative Measures for Admissions: Clarence Kreiter (Editor)
Advances in Simulation: Jane L. Miller
Ambulatory Pediatrics: Clarence Kreiter
Biomed Central: Medical Education: Patrick Barlow
BMC Medical Education: Clarence Kreiter, Marcy Rosenbaum
Doody's Review Service: Jeff Pettit
Education for Health: Marcy Rosenbaum
Family Medicine: Marcy Rosenbaum
Journal of Graduate Medical Education: Patrick Barlow
Journal of Postgraduate Medicine: Marcy Rosenbaum
Journal of Research in Interprofessional Education: Jane L. Miller
Medical Education Online: Clarence Kreiter, Marcy Rosenbaum
MedEdPORTAL: Jane L. Miller, Jeff Pettit, Marcy Rosenbaum
Patient Education and Counseling: Marcy Rosenbaum
Pediatrics: Marcy Rosenbaum
Simulation in Healthcare: Jane L. Miller
Substance Abuse Treatment, Prevention, and Policy: Donna Lancianese
Teaching and Learning in Medicine: Clarence Kreiter, Marcy Rosenbaum
The Journal of the American Academy of Physician Assistants: Clarence Kreiter

All Together Better Health Conference Proposals: Jane L. Miller
AEA Conference submissions: Patrick Barlow
AERA Conference Annual Meeting Proposals: Clarence Kreiter
American Academy for Communication in Healthcare Proposals: Marcy Rosenbaum
AAMC Annual Meeting Research in Medical Education papers: Clarence Kreiter
AAMC Annual Meeting Research in Medical Education sessions: Clarence Kreiter, Susan Lench
AAMC Central Group on Education Affairs Annual Meeting Proposals: Susan Lench, Jeff Pettit
ASPE Conference Proposals: Jane L. Miller
International Conference on Communication in Healthcare Abstracts: Marcy Rosenbaum
National Council on Measurement in Education: Clarence Kreiter