

Office of Consultation and Research  
in Medical Education  
(OCRME)

Activities  
2018



Jeff Pettit, Ph.D., Interim Director  
OCRME, 1-204 Medical Education Building  
Iowa City, IA 52242-1000  
Phone: (319) 335-8901  
FAX: (319) 335-8904  
<https://medicine.uiowa.edu/ocrme/>

## Mission

OCRME links research with educational practice through its work with faculty, staff, and students. We apply proven knowledge and technology in order to produce innovative education within the limits of available resources. We provide coordination of services and products that support curriculum development, faculty development, measurement, evaluation, and educational research. We recognize the value that each member contributes to our efforts and we strive to set an example of thoughtful application of validated methods in our own teaching and research.

## Vision

To advance excellent and innovative health sciences education through application of sound evidence and development of new knowledge.

## Table of Contents

<b>Summary of Annual Report</b> .....	<b>1</b>
<b>Team Members 2018</b> .....	<b>3</b>
<b>Organizational Chart</b> .....	<b>4</b>
<b>Curriculum Development</b> .....	<b>5</b>
Curriculum Development Projects.....	5
<b>Teaching Skills Development and Faculty Development</b> .....	<b>7</b>
Programs .....	7
Medical Education Degree and Certificate Programs.....	9
Workshops and Presentations on Teaching Skills and Scholarship .....	10
<b>Research, Measurement, and Evaluation</b> .....	<b>15</b>
Research, Measurement, and Evaluation Projects .....	15
Computer-Based Testing .....	20
<b>Research and Scholarly Presentations</b> .....	<b>22</b>
<b>Publications</b> .....	<b>25</b>
<b>Service to the College, University, and Academia</b> .....	<b>27</b>
Committee Membership .....	27
Teaching in College of Medicine and Other Courses.....	28
Professional Organizations .....	30



## Summary of Annual Report

*The Office of Consultation and Research in Medical Education (OCRME) offers assistance to those involved in teaching and education throughout the College of Medicine by providing support for curriculum development, faculty development and educational research. OCRME consultants provide individual consultations, serve as project staff, conduct workshops and assist in preparing grant proposals. Consultants also engage in their own research and scholarly activities.*

### **From January 1 to December 31, 2018, OCRME personnel**

- Supported the College through over 100 projects and programs in curriculum development, faculty development, measurement, evaluation and research.
- Supported 7 externally funded projects.
- Supported test development and administration for 32 courses, clerkships and programs.
- Conducted or sponsored over 60 workshops, seminars and presentations attended by over 1100 on-campus and community faculty members, residents and staff.
- Continued to conduct the Medical Education Degree Program and the Medical Education Certificate.
- Gave 25 oral and poster presentations and 4 workshops at regional, national or international conferences.
- Authored or co-authored 13 peer-reviewed publications.
- Reviewers for several peer-reviewed journals, conference proposals for the Association of American Medical Colleges and other professional organizations, and submissions to MedEdPORTAL.
- Served on numerous College, University and professional committees.

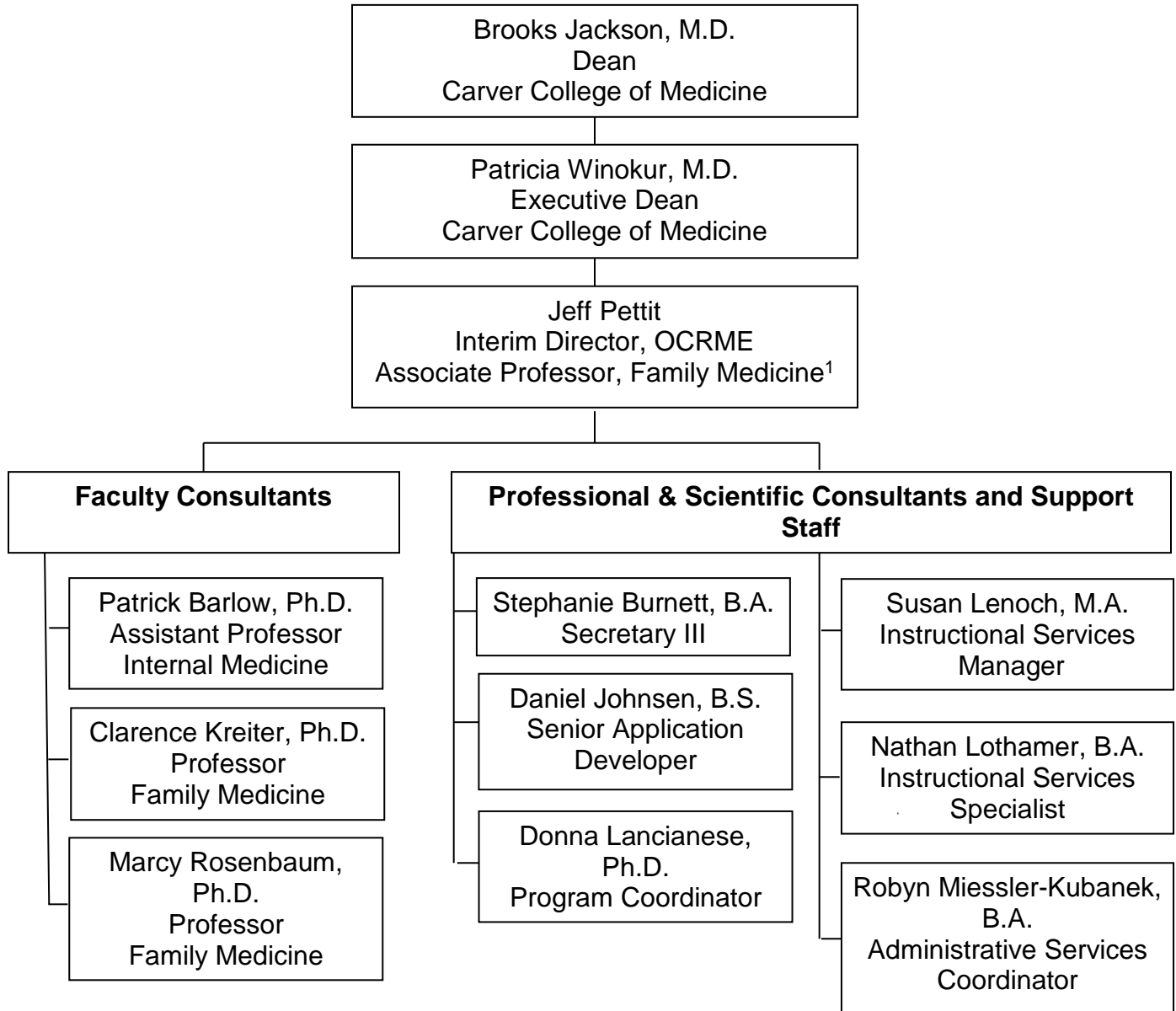


## Team Members 2018

Patrick Barlow, Ph.D., Assistant Professor, Internal Medicine, Program Evaluation  
Stephanie Burnett, B.A., Secretary III  
Kristi Ferguson, Ph.D., Director, Professor, General Internal Medicine, Faculty Development  
and Evaluation<sup>1</sup>  
Dan Johnsen, B.S., Senior Application Developer, Computer-Based Instruction  
Clarence (Clare) Kreiter, Ph.D., Professor, Family Medicine, Statistics and Measurement  
Donna Lancianese, Ph.D., Program Coordinator, Program Evaluation and Research  
Nathan Lothamer, B.A., Instructional Services Specialist, Curriculum Support  
Susan Lenocho, M.A., Instructional Services Manager, Instructional Design  
Robyn Miessler-Kubanek, B.A., Administrative Services Coordinator  
Jeff Pettit, Ph.D., Interim Director and Associate Professor, Family Medicine  
Marcy Rosenbaum, Ph.D., Professor, Family Medicine, Faculty Development  
Sahai Family Professorship of Medical Education Recipient

<sup>1</sup>Retired in 2018

# Organizational Chart 2019



<sup>1</sup>Kristi Ferguson, Director, until October 1, 2018



## Curriculum Development

*OCRME assists faculty and staff to design, develop, implement and evaluate curricula, academic programs and instructional methods, including computer-based applications. We help develop support systems for course evaluation.*

During 2018, OCRME staff

- Participated in 21 curriculum development projects involving faculty and staff from several departments and offices. The table below lists these projects. See also the Research and Evaluation section for projects focused on evaluating curricula.
- Provided over 30 less intensive consultations related to curriculum development and evaluation. Examples of these consultations include assistance with
  - Development of courses/electives;
  - Exam improvements;
  - Online module development;
  - Technology solutions, such as formatting student laptops for computer-based testing.
- Served on several education-related committees. (See the section on Service.)

### Curriculum Development Projects

<b>Project</b>	<b>Collaborators</b>	<b>OCRME Consultants</b>
Curriculum Repository		Nathan Lothamer, Kristi Ferguson
Google Analytics for Curriculum Repository		Nathan Lothamer
Exemplars on the Curriculum Repository	Strand Directors, Office of Student Affairs and Curriculum (OSAC)	Kristi Ferguson, Nathan Lothamer
Clinical Transitions: Difficult Conversation Sessions	Tony Brenneman, Physician's Assistant Program	Marcy Rosenbaum
SCM: Virtual Case Management	DeeDee Stafford, Internal Medicine	Daniel Johnsen
Learning Module Development Model	Shannon Manley, Carver College of Medicine	Daniel Johnsen
Leadership for Future Physicians	Brooks Obr, Emergency Medicine; Megan McVancel, Office of Student Affairs and Curriculum (OSAC)	Jeff Pettit
Developing a Comprehensive Communication Skills Curriculum	Clinical and Professional Skills Directors	Marcy Rosenbaum
Training for Research Professionals	Julie Cayler, Institute for Clinical and Translational Science (ICTS)	Susan Lenocho

<b>Project</b>	<b>Collaborators</b>	<b>OCRME Consultants</b>
Patient Safety Elective	Eric Epping, Psychiatry	Kristi Ferguson
Redesigning SP-Based Exams	Ellen Franklin, Performance-Based Assessment Program	Clare Kreiter
Arts and Medicine Electives	Jason Lewis, Office of Student Affairs and Curriculum (OSAC); Alan MacVey, Theatre Department; David Gier, Music Department	Marcy Rosenbaum
Internal Medicine Resident Leadership Curriculum	Carolyn Hillard, Manish Suneja, Internal Medicine	Marcy Rosenbaum
UIHC Physician Communication Workshops	Jonathan Bothell, Director of Office of Patient Experience	Marcy Rosenbaum
Teaching Skills Modules	Graduate Medical Education (GME) Office	Jeff Pettit, Kristi Ferguson, Marcy Rosenbaum, Nathan Lothamer, Daniel Johnsen
Collegiate Objectives Mapping and Metrics	Assessment Committee; CCOM Office of Information Technology	Kristi Ferguson, Susan Lench, Patrick Barlow
Objective Structured Clinical Exam	Tony Brenneman, Physician Assistant Program	Daniel Johnsen
Automatic Short Answer Scoring of IVOSCEs	Fred Dee, Thomas Haugen, Leslie Bruch, John Blau, Pathology	Nathan Lothamer
Upgrading the Medical Curriculum Repository	Office of Student Affairs and Curriculum (OSAC)	Nathan Lothamer
Integrated Instruction of Surface Anatomy and Massage Therapy	Darren Hoffmann, Anatomy; Dede Dancing, Licensed Massage Therapist	Marcy Rosenbaum
Analysis and Scoring of SP Data	Ellen Franklin, Performance-Based Assessment Program	Clare Kreiter

## Teaching Skills Development and Faculty Development

*OCRME assists faculty and others to develop their teaching skills through workshops, self-instructional programs and individual consultations. We also assist departments to implement and evaluate their faculty development programs.*

In 2018, OCRME

- Continued the Medical Education Degree and Certificate programs with enrollment of 21.
- Continued a 4-week elective course on teaching methods completed by 40 fourth-year medical students.
- Held 6 quarterly training sessions for 11 on-campus Teaching Scholars and 3 training sessions for 13 Des Moines Teaching Scholars.
- Provided training for 15 Community Teaching Scholars and helped them provide 4 regional workshops attended by 84 faculty, residents and staff.
- Conducted 34 training sessions attended by over 600 faculty members on campus.
- Conducted 20 workshops on teaching or leadership skills attended by over 350 residents.
- Advised 42 individuals on teaching, leadership or communication skills.

### Programs

Program	Collaborators	OCRME Consultants
<b><i>Faculty and the College at Large</i></b>		
Medical Education Degree	Office of the Dean	Kristi Ferguson, Clare Kreiter, Marcy Rosenbaum, Jeff Pettit, Patrick Barlow, Stephanie Burnett
Teaching Scholars	Office of the Dean	Kristi Ferguson, Marcy Rosenbaum, Susan Lenocho, Jeff Pettit, Stephanie Burnett
Community Teaching Scholars	Office of Statewide Clinical Education Programs (OSCEP)	Marcy Rosenbaum, Kristi Ferguson, Jeff Pettit, Susan Lenocho
Skills for Educators Workshops		Kristi Ferguson, Marcy Rosenbaum, Susan Lenocho, Jeff Pettit, Patrick Barlow, Stephanie Burnett

<b>Program</b>	<b>Collaborators</b>	<b>OCRME Consultants</b>
Certificate Program in Educational Leadership	Mark Wilson, GME Office	Jeff Pettit
Team-Based Simulation Design and Debriefing Workshops	Paul Leonard, Anesthesia; Thomas Persoon, Operational Improvement; Thomas Collins, Transplant Surgery	Kristi Ferguson, Jeff Pettit
TeamSTEPPS in Family Medicine	Wendy Shen, Family Medicine	Jeff Pettit
Team Development	Dave Clark, Palliative Care Team	Jeff Pettit
Family Medicine Mentoring Program	Kelly Skelly, Family Medicine	Jeff Pettit
Des Moines Teaching Scholars Program	Steve Craig, Des Moines Branch Campus	Marcy Rosenbaum, Kristi Ferguson, Jeff Pettit
Strengths Finder Training	Palliative Care; OSCEP; Healthcare Information Systems	Jeff Pettit
Practice Management: Leadership Training	Family Medicine	Jeff Pettit
Faculty and Fellows as Clinical Educators (FACE) Program	Krista Johnson, Manish Suneja, Internal Medicine	Marcy Rosenbaum
Faculty Development for Hematology/Oncology Faculty	Daniel Berg, Najla Itani, Internal Medicine	Marcy Rosenbaum
<b><i>Residents, Fellows, and Students</i></b>		
Rising Chief Resident Leadership Symposium	Mark Wilson, GME Office	Jeff Pettit
Chief Resident Leadership Development Program	Mark Wilson, GME Office	Jeff Pettit
New Resident/Fellow Orientation	Mark Wilson, GME Office	Jeff Pettit
Teaching Skills for Medical Students		Jeff Pettit, Kristi Ferguson
Teaching Distinction Track	Hugh Hansen, Carrie Bernat, OSAC	Kristi Ferguson, Jeff Pettit
Teaching Session for Internal Medicine Residents	Jane Rowat, Krista Johnson, Katie White, Manish Suneja, Internal Medicine	Marcy Rosenbaum, Jeff Pettit
<b><i>National and International</i></b>		
International Network of Teachers of Medical Interviewing	International Association for Communication in Healthcare	Marcy Rosenbaum
Pairing with Colleagues Program Website	International Conference on Communication in Healthcare	Daniel Johnsen, Marcy Rosenbaum
Chief Resident Leadership Development, South Carolina	Renee Connolly, Palmetto Health System, Charleston, SC	Jeff Pettit

<b>Program</b>	<b>Collaborators</b>	<b>OCRME Consultants</b>
Chief Resident Leadership Development Program, Qatar	Carma Bylund-Lincoln, Hamad Medical Corporation, Doha, Qatar	Jeff Pettit
Communication Teaching Training the Trainers Program for Austria	Marlene Sator, Gesundheit Osterreich GmbH (GOG); Institute for Health Promotion and Prevention (IfGP), Vienna, Austria	Marcy Rosenbaum

### **Medical Education Degree and Certificate Programs**

*21 faculty participants and staff were enrolled in these programs with 3 graduates in 2018. The following is a list of courses that we offer and the course directors.*

MED:9701	Instructional Design and Technology, Jeff Pettit
MED:9702	Clinical Teaching in Medical Education, Marcy Rosenbaum
MED:9703	Educational Research and Evaluation, Patrick Barlow
MED:9711	Teaching Methods in Medical Education, Kristi Ferguson, Marcy Rosenbaum
MED:9712	Introduction to Educational Measurement, Clarence Kreiter
MED:9713	Assessment in Medical Education, Clarence Kreiter
MED:9714	Current Issues in Medical Education, Kristi Ferguson
MED:9720	Portfolio, Kristi Ferguson, Marcy Rosenbaum
MED:9721	Study in Faculty Development, Marcy Rosenbaum
MED:9722	Independent Study, Kristi Ferguson
MED:9724	Leadership in Medicine, Jeff Pettit
MED:9725	Simulation in Medical Education, Kristi Ferguson
MED:9726	Curriculum Development in Medical Education, Jeff Pettit
MED:9727	Teaching and Assessing Communication Skills in Medical Education, Marcy Rosenbaum

## Workshops and Presentations on Teaching Skills and Scholarship

### Workshops and Presentations Primarily for Faculty

*Teaching Scholars Program.* Training sessions for program participants.

Leadership and Conflict, January 19, Jeff Pettit.

Test Question Writing, February 16, Kristi Ferguson.

Teaching Procedures, February 16, Kristi Ferguson.

Clinical Teaching/Teaching in the Presence of the Patient, March 30, Marcy Rosenbaum.

Research and Scholarship, April 20, Kristi Ferguson and Marcy Rosenbaum.

Clinical Reasoning, May 18, Manish Suneja.

Mentoring, May 18, Kristi Ferguson.

Communications, June 15, Jeff Pettit.

Change Management, June 15, Jeff Pettit.

*Community Teaching Scholars Program Workshops.* Training sessions for program participants.

Burnout and Resilience, April 6, Marcy Rosenbaum.

Mechanistic Case Diagramming, September 14, Kristi Ferguson.

Developing Effective Faculty Development Workshops, November 15, Susan Lench, Jeff Pettit, Marcy Rosenbaum.

*Community Teaching Scholars Regional Workshops.* Workshops for community-based preceptors, co-sponsored by the Office of Statewide Clinical Education Programs and the Regional Medical Education Centers. This year Community Teaching Scholars collaborated with OCRME consultants to define, develop and deliver a core workshops for preceptors.

Autonomy and Matching Learners Needs, Gena Benoit and Niral Tilala,

September 12, Mason City.

September 12, Waterloo.

December 6, Cedar Rapids.

December 6, Des Moines.

*Des Moines Teaching Scholars Program.* Training session for program participants.

Effective, Efficient Clinical Teaching, February 22, Marcy Rosenbaum.

Effective Small Group Teaching, May 3, Kristi Ferguson.

Teaching in the Presence of the Patient, September 20, Marcy Rosenbaum.

*Skills for Educators Workshops,* monthly skills workshops for faculty and staff.

Clinical Teaching, January 18, Marcy Rosenbaum, Krista Johnson, Jeff Pettit.

Scholarship and Research, March 8, Kristi Ferguson, Patrick Barlow, Marcy Rosenbaum.

Small Group Teaching, September 21, Kristi Ferguson.

Interactive Lecturing, October 19, Marcy Rosenbaum.

Clinical Teaching, November 16, Marcy Rosenbaum, Jeff Pettit.

*Certificate Program for Educational Leadership*, Jeff Pettit.  
Motivation, January 23.  
Managing Up, April 24.

Anesthesia

*Teaching in the OR*, February 5, Jeff Pettit.  
*Feedback*, February 12, Jeff Pettit.  
*How to Moderate PBLDs*, March 27, Kristi Ferguson.  
*Small Group Teaching*, April 16, Kristi Ferguson.

Family Medicine

*Virtual Team Building*, July 18, Jeff Pettit.  
*Difficult Teacher Learner Interactions*, October 17, Marcy Rosenbaum.

Internal Medicine

*Peer Observation and Feedback*, August 6, Marcy Rosenbaum.  
*Interactive Lecturing*, December 4, Marcy Rosenbaum.

Neurology

*Creating Learning that Lasts: Integration is the Key*, March 6, Kristi Ferguson.

Ophthalmology

*Interactive Lecturing*, April 4, Marcy Rosenbaum.  
*Common Approaches to Medical Education Research*, September 25, Patrick Barlow.

Orthopedics

*New Faculty Orientation*, September 27, Marcy Rosenbaum.

Pediatrics Palliative Care Team

*Team Development*, January 23, Jeff Pettit.  
*Leadership Styles*, January 25, Jeff Pettit.

Psychiatry

*Feedback*, November 6, Jeff Pettit co-presented with Emily Crocker and Erin Morse.

Urology

*Feedback*, September 25, Jeff Pettit.  
*Evaluation*, October 23, Jeff Pettit.

*Clifton Strengths*, January 9. Presentation for Information Technologies employees, Jeff Pettit.

*OCRME*, April 6 and August 3. Presentation for new faculty orientation, Office of Faculty Affairs, Jeff Pettit.

*Effective Feedback*, April 17. Presentation for the Inter-Campus CEC meeting, Jeff Pettit.

*Decision Making*, April 30. Presentation for Team-Based Simulation Design and Debriefing Workshop, Jeff Pettit.

*Team Development*, June 25 and 28. Presentation for the Transitional Performance Development series, Jeff Pettit.

Facilitated Strategic Planning Retreat with leaders from CADRE, October 18, Jeff Pettit.

*Evaluation of an Educational Program-Is it the Same as Research?* November 9. Presentation for the Office of Faculty Affairs' Scholarly Productivity for the Busy Clinician session, Marcy Rosenbaum.

*Relationship Centered Care*, December 3. Presentation for UIHC Office of Patient Experience, Marcy Rosenbaum.

### **Workshops and Presentations for Residents and Fellows**

Presentations for the Chief Resident Leadership Development Program, Jeff Pettit.

*Culture*, February 13, co-presented with Mark Wilson.

*Motivation*, February 27, co-presented with Mark Wilson.

*Change Management*, March 13, co-presented with Mark Wilson.

*Transitions*, April 10.

#### Dermatology Residents

*Resident Teaching Skills*, March 1 and July 26, Jeff Pettit.

#### Family Medicine

*Resident Teaching Skills*, January 19 and July 18, Jeff Pettit.

*Team Development*, July 18, Jeff Pettit.

#### Internal Medicine Fellows

*Conflict Management*, January 12, Jeff Pettit.

*Emotional Intelligence*, April 20, Jeff Pettit.

#### Internal Medicine Residents

*Difficult Clinician-Patient Relationships*, May 30, Marcy Rosenbaum.

#### OB/Gyn Residents

*Resident Teaching Skills*, June 26 and July 10, Jeff Pettit.

*Feedback*, September 18, Jeff Pettit.

#### Pathology Residents

*Peer Coaching*, January 8, Jeff Pettit.

*Small Group Teaching: It's All About the Questions*, March 5, Kristi Ferguson.

#### Pediatric Fellows

*Effective Feedback Refresher*, April 27, Marcy Rosenbaum co-presented with Eyad Hanna.

*Conflict Management*, August 1, Jeff Pettit.



### Surgery Residents

*Leadership Styles*, July 30, Jeff Pettit.

*Conflict Management*, August 6, Jeff Pettit.

*Team Building*, August 20, Jeff Pettit.

*Rising Chief Resident Leadership Symposium*, March 27. Co-Facilitated for the GME office, Jeff Pettit with Mark Wilson.

### **Regional, National and International Workshops**

*Teaching Communication Skills in the Context of Clinical Care*, March 26-27. Invited lectures for the Faculty Development Series at the Virginia Tech Carilion School of Medicine, Roanoke, VA, Rosenbaum, M.

*Curriculum Development in Communication and Healthcare*, May 17-18. Invited course for OPGK-tEACH Certified Training Programme, Vienna, Austria, Rosenbaum, M.

*Why Should Anyone be Led by You?* August 30. Presentation for Genesis Family Medicine Clinic faculty and residents, Davenport, IA, Pettit, J.

*How to Teach Communication Skills in the Context of Clinical Practice: Missed Opportunities in Workplace Based Learning*, November 1. Workshop presented at the annual meeting of Generalists in Medical Education, Austin, TX, Rosenbaum, M., Kapadia, M., Martins-Manhica, N.

### **Faculty/Fellows Mentoring**

Marcy Rosenbaum: Kate Robb, Aaron Kunz, Brigit Ray, Usha Perepu, Erin Howe, Derek Zhorne

### **Collaborators**

The following faculty members and staff assisted in our faculty development efforts by teaching portions of workshops and seminars on campus or at statewide sites.

Erin Crocker  
Nicole Martins-Manhica  
Emily Morse  
Manish Suneja  
Mark Wilson

#### MME Students/Graduates

Eyad Hanna  
Krista Johnson  
Muneera Kapadia



## Research, Measurement and Evaluation

*OCRME consultants work with faculty on education and health care research projects. We help faculty develop methods to measure knowledge and performance and to analyze and interpret measurement information. We provide ongoing support for computer-based testing and performance-based assessment.*

During 2018, OCRME consultants

- Participated in 62 research and evaluation projects. The table below and on the following pages lists these projects.
- Supported test development and administration for 32 courses, clerkships and other programs.
- Authored or co-authored 13 peer-reviewed publications. (See Publications.)
- In addition to the projects below, provided over 30 brief consultations in which OCRME consultants supported individuals to explore research projects, develop survey instruments, and produce educational scholarship.

### Research, Measurement, and Evaluation Projects

Project	Collaborators	OCRME Consultants
<b><i>Undergraduate Medical Education</i></b>		
Assessment of Curriculum Renewal	Medical Education Council, CCOM	Kristi Ferguson, Patrick Barlow, Clare Kreiter, Susan Lenoch
LCME Briefing Book	Chris Cooper, Office of Student Affairs and Curriculum (OSAC)	Patrick Barlow, Donna Lancianese, Susan Lenoch
Accreditation Actions Plans	Medical Education Council, Office of Student Affairs and Curriculum (OSAC)	Patrick Barlow, Donna Lancianese, Susan Lenoch
Outcomes Evaluation of the Revised Liaison Committee Experience for CCOM Preclinical Courses	Kasra Zarei, Graduate Fellow	Patrick Barlow, Donna Lancianese
Prevalence and Impact of Medical Scribe Experiences on Subsequent Medical Student Learning	Kelly Skelly, Family Medicine	Marcy Rosenbaum
Graduate and Residency Director Surveys		Kristi Ferguson
Case-Based Learning Groups for Carver College of Medicine Applicants	Kathlene Huebner, Amy A'Hearn, Office of Student Affairs and Curriculum (OSAC)	Kristi Ferguson
Preparing Student Liaison Committee Evaluations	Medical Arts and Science Committee	Patrick Barlow

<b>Project</b>	<b>Collaborators</b>	<b>OCRME Consultants</b>
ICON Standardization of Clerkship Sites	Catherine Chavez, Pediatrics; Sally Fisher, OBGyn; Catherine Unruh, Surgery; Dana Hartman, Internal Medicine	Patrick Barlow, Donna Lancianese
Early Clinical Experiences Evaluation Project	Tony Brenneman, PA Program, Amal Shibli-Rahhal, Internal Medicine, Carrie Bernat, Megan McDowell, OSAC	Marcy Rosenbaum
Meta-Analytic Review of the Use of Subjective Assessment in Admission		Clare Kreiter
Opportunities for Teaching Communication During Clinical Clerkships	Katie White, Internal Medicine; Nicoll Manhica, Medical Student	Marcy Rosenbaum, Patrick Barlow
Validation of a Case Diagramming Tool to Assess Higher-Order Thinking Skills <sup>1</sup>	Fred Dee, Tom Haugen, Pathology	Kristi Ferguson
Scale Development for Measuring “Ageism” in Dental Students	Leo Marchini, Ryan Rucker, UI College of Dentistry; Anastasia Kossioni, University of Athens, Greece	Patrick Barlow
Scale Development for Measuring Student Perceptions of Learning Environments in Dental Students	Leo Marchini, Ryan Rucker, UI College of Dentistry; Anastasia Kossioni, University of Athens, Greece	Patrick Barlow
Integrated Instruction of Surface Anatomy and Massage Therapy	Darren Hoffmann, Anatomy and Cell Biology; Dede Dancing Licensed Massage Therapist	Marcy Rosenbaum
Medical Student Career Trajectory	Jerrold Keith, Plastic and Reconstructive Surgery	Patrick Barlow
Medical Education Monitoring and Evaluation (MEME)	Medical Education Council, OSAC	Patrick Barlow, Susan Lench, Donna Lancianese
Evaluation of the UI Summer Health Professions Education Program (SHPEP)	Denise Martinez, Family Medicine; Michelle McQuistan, UI College of Dentistry; Tanya Uden-Holman, UI College of Public Health; Richard Barajas, UI College of Pharmacy; Asih Asikin-Garmager, UI College of Education	Patrick Barlow
MSWeight: Weight Management Counseling in Medical School: A Randomized Controlled Trial <sup>1</sup>	Katherine White, Internal Medicine; Ellen Franklin, PBA Program; Laina Edwards, Jeff Emrich, OSAC; Pamela Trapane, Pediatrics	Kristi Ferguson

<sup>1</sup>Funded by external grants

<b>Project</b>	<b>Collaborators</b>	<b>OCRME Consultants</b>
<b><i>Clinical Teaching and Graduate Medical Education</i></b>		
Internal Medicine and Surgery Resident Interactions	Muneera Kapadia, Surgery; Manish Suneja, Internal Medicine; Christoffer Amdahl, Medical Student; Office of Student Affairs and Curriculum (OSAC)	Marcy Rosenbaum
Urology Communication Literature Review	Kathy Kieran, University of Washington	Marcy Rosenbaum
Residency Training Program in Primary Care	Kate Thoma, George Bergus, Family Medicine	Patrick Barlow
Engaging Multiple Levels of Learners During Inpatient Teaching	Patricia Quigley, Johns Hopkins, FL	Marcy Rosenbaum
Communication Skills Teaching in Surgery Residency Programs	Muneera Kapadia, Surgery	Marcy Rosenbaum
Impact of Work Hours on Resident-Faculty Interactions	Kristin Gerjevic, Dartmouth; Manish Suneja, Internal Medicine	Marcy Rosenbaum
Milestone Evaluations in Family Medicine, Pediatrics, and Internal Medicine	Kate Thoma, Family Medicine; Eyad Hanna, Pediatrics; Manish Suneja, Internal Medicine	Patrick Barlow, Kristi Ferguson
Resident Autonomy Study	Cameron Crockett, Medical Student; Manish Suneja, Internal Medicine; Charuta Joshi, Children's Hospital, CO	Marcy Rosenbaum
Educational Environment Study	Peter Daniolos, Erin Martin, Child & Adolescent Psychiatry	Jeff Pettit
Bad News Education for Pediatric Fellows	Kate Robb, Pediatrics	Marcy Rosenbaum
Comparing Resident Communication with Patients and Patient Presentations	Kelly Skelly, Family Medicine; Meredith Arpey, Luther College	Marcy Rosenbaum
Pediatric Resident Burnout Prevention	Catherine Pinnaro, Stephanie Houston, Amy Stier, Pediatrics	Patrick Barlow
Emergency Medicine Resident Burnout Prevention	Emma Nash, Dan Runde, Emergency Medicine	Patrick Barlow
Internal Medicine Resident Applicant Personal Statements	Manish Suneja, Bharat Kumar, Internal Medicine	Patrick Barlow, Donna Lancianese
Emergency Medicine Resident Teaching Time Perceptions	Brooks Obr, Dan Runde, Emergency Medicine	Patrick Barlow
Electronic Medical Record Communication	Kelly Skelly, Family Medicine	Marcy Rosenbaum

<b>Project</b>	<b>Collaborators</b>	<b>OCRME Consultants</b>
Transitional Year Resident Review Committee	TY Program Directors and Coordinators, ACGME	Jeff Pettit
Communication Training in Postgraduate Medicine	Carma Bylund, University of Florida	Marcy Rosenbaum
<b><i>Measurement Research</i></b>		
Assessment of Diagnostic Reasoning Across the Continuum	Manish Suneja, Jane Rowat, Bharat Kumar, Internal Medicine	Kristi Ferguson
Adaptive Simulation of Communication Skills	Teresa Pawlikowska, Catherine Bruen, Royal College of Surgeons in Ireland, Dublin	Clare Kreiter
Evaluating Multi-Campus Admission Interviews	Terry Straton, University of Kentucky	Clare Kreiter
Flexible-Schedule Computer-Based Exams	CCOM faculty in M1 and M2 courses	Daniel Johnson
<b><i>Faculty and Professional Development</i></b>		
Training Grant-Developmental Disabilities (ILEND) <sup>1</sup>	Lenore Holt, Speech Pathology	Marcy Rosenbaum
Obtaining Measures of Supervisory Skills in Clinical Practice	Brad Hindman, Franklin Dexter, Anesthesia	Clare Kreiter
Qualitative Analysis-Daily Evaluation Faculty Feedback	Michael Murrell, Michelle Krupp, College of Dentistry	Patrick Barlow, Donna Lancianese
Dentistry Faculty Professional Development Needs	Michelle Krupp, College of Dentistry	Patrick Barlow
Evaluation of the Pairing with Colleagues Program	Christoffer Amdahl, Medical Student; Office of Student Affairs and Curriculum (OSAC)	Marcy Rosenbaum, Daniel Johnsen
<b><i>Healthcare Quality and Population Health</i></b>		
Needs Assessment of I-CART Users	Boyd Knosp, CCOM Dean's Office; ICTS	Patrick Barlow
Communication during Pre-Operative and Post-Operative Conversations with Families	Munee Kapadia, Paige Zhou, Surgery	Marcy Rosenbaum
Evaluating the UI Health Care CultureVision Initiative	Sherree Wilson, Denise Martinez, Office of Cultural Affairs and Diversity	Patrick Barlow
LVAD Patient Review Survey	Kaitlyn Dubishar, UI Heart & Vascular Center	Patrick Barlow
Bundle for Exercise and TENS Intervention Study	Toni Tripp-Reimer, Barb Rakel, College of Nursing	Marcy Rosenbaum, Donna Lancianese

<sup>1</sup>Funded by external grants

<b>Project</b>	<b>Collaborators</b>	<b>OCRME Consultants</b>
Evaluation of Contraceptive Education Intervention at the Iowa City Shelter House	Marielle Maurice, Lindsay Goad, Medical Students; Abbey Hardy-Fairbanks, OB/Gyn	Patrick Barlow
Evaluation of the Institute for Clinical & Translational Science (ICTS) <sup>1</sup>	Kanika Arora, College of Public Health; Kimberly Dukes, ICTS; Pat Winokur CCOM Administration	Patrick Barlow
Socioeconomic Status and Healthcare Quality	Anne Gaglioti, Family Medicine; Nicholas Arpey, Student	Marcy Rosenbaum
Assessment and Validation of a New Questionnaire to Evaluate and Screen for Bladder and Bowel Dysfunction in Children	Taha Anwar, Doug Storm, Chris Cooper, Urology	Kristi Ferguson
SPARC2i: A Collaborative Inter-CTSA e-Commerce Marketplace for Research Services <sup>1</sup>	Boyd Knosp, CCOM Admin; James Schappet, Medical University of South Carolina; Nic Johnson, University of Utah; LA CaTS	Patrick Barlow
A National Center for Digital Health Informatics Innovation <sup>1</sup>	Dave Eichman, UI School of Library and Information Sciences; Northwestern University in partnership with Oregon Health & Science University of Washington; Johns Hopkins University School of Medicine; Sage Bionetworks; The Scripps Research Institute, Washington	Patrick Barlow
Burroughs Welcome Fund Physician-Scientist Institutional Award Planning Grant Application <sup>1</sup>	Jeff Murray, Nancy Davin, Beth Knudson, ICTS; Lori Adam, College of Liberal Arts & Sciences	Patrick Barlow
Needs Assessment of Homeless Individuals	Marielle Maurice, Christine Todd, Lindsay Goad, Medical Students; Anne Gaglioti, Family Medicine; Colleen Stockdale, ObGyn	Patrick Barlow
UI Mobile Museum 2018	Nancy Davin, ICTS; Beth Knudson, UI Mobile Museum; JC Gillet, Katherine Moermond, Old Capitol Museum	Patrick Barlow

<sup>1</sup>Funded by external grants

## Computer-Based Testing

OCRME staff support courses and clerkships to administer computer-based tests and provide products for test administration, item-banking and reporting. Daniel Johnsen is the developer, and along with Robyn Miessler-Kubaneck, provides logistical support. In 2018, they supported 268 examinations across 32 courses with over 12900 logins to exams, quiz modules and simulation exams. Faculty members created over 1200 new questions in ItemBanker, bringing the total number of items up to over 30700.

OCRME now provides support to 100% of courses comprising the M/PA1-M/PA2 curriculum, more than half of the M3/M4 required clerkships with the Computer-Based Testing program, several residency programs, and some College of Dentistry and Basic Sciences courses taught by CCOM faculty.

### Computerized Patient Case Simulator (PCS) Examinations in 2018

Internal Medicine Inpatient Clerkship; Lisa Antes and Jane Rowat, Internal Medicine  
Internal Medicine Outpatient Clerkship, Katherine White, Internal Medicine

### OCRME Supported Examinations in 2018

Anesthesia Clerkship; James Choi, Sapna Ravindranath, Anesthesia  
CAPS I; Anthony Brenneman, Physician Assistant Program  
CAPS I OSCE Exam; Anthony Brenneman, Physician Assistant Program  
CAPS II; Daniel Runde, Emergency Medicine  
CAPS III; Antonio Sanchez, Internal Medicine  
CAPS III OSCE Exam; Antonio Sanchez, Internal Medicine  
Dermatology Clerkship; Vincent Liu, Dermatology  
Family Medicine Preceptorship; Jill Endres, Family Medicine  
Foundations of Cellular Life; Darren Hoffman, Nathan Swailes, Anatomy and Cell Biology  
Functional Neuroanatomy for Basic Science Graduate Students; Justin Sipla, Anatomy and Cell Biology  
General Histology Online for Master in Anatomy Program Students; Nathan Swailes, Anatomy and Cell Biology  
GRISTO for Dental Students; Darren Hoffman, Nathan Swailes, Anatomy and Cell Biology  
Human Physiology Exam for Dental and Graduate Students; Wayne Johnson, Molecular Physiology and Biophysics  
Internal Medicine Inpatient Clerkship; Lisa Antes and Jane Rowat, Internal Medicine  
Introduction to Medical Education; Carrie Bernat, Office of Student Affairs and Curriculum



MOHD I; Sarat Kuppachi, Internal Medicine; Andrew Russo, Physiology  
MOHD II; Jon Houtman, Microbiology; Justin Sipla, Anatomy and Cell Biology  
MOHD III; Matthew Krasowski, Pathology; Thomas Schmidt, Physiology  
MOHD IV; Barry Kasson, Pharmacology; DeeDee Stafford, Internal Medicine  
MOHD Keystone; Jason Barker, Internal Medicine; Daniel Weeks, Biochemistry  
MAS I; Amy Dowden, Internal Medicine; Aaron Kunz, Family Medicine  
MAS II; Pam Trapane, Pediatrics  
MAS III; Eric Epping, Internal Medicine  
Medical Gross Anatomy; Marc Pizzimenti, Anatomy and Cell Biology  
Neurology Clerkship; Connie Pieper, Tracey Cho, Neurology  
Ophthalmology Clerkship; Pavlina Kemp, Ophthalmology  
Orthopaedics Clerkship; Charles Clark, Jose Morcuende, Orthopaedic Surgery  
Otolaryngology Clerkship; Jose Manaligod, Otolaryngology  
Physician Assistant; Theresa Hegmann, Physician Assistant Program  
Residents-Internal Medicine; Justin Smock, Internal Medicine  
Residents-Pathology (Blood Bank); Michael Knudson, Pathology  
Residents-Pathology (Chemistry); Matthew Krasowski, Pathology  
Residents-Pathology (Microbiology); Bradley Ford, Pathology  
Urology Clerkship; Chad Tracy, Urology

### ***OCRME Test Development and Administration Products***

*ItemBanker* allows developers to create a secure database of exam questions that they can easily edit and select in order to prepare paper or computer-based exams. The program performs item analysis in order to improve exam performance and reliability. The historical performance of the items is then available for future use in exam construction.

*Module Viewer* is a test delivery system designed for administering on-line exams.

*Module Maker* is an on-line tool used to administer tests created in Itembanker for Module Viewer.

*Patient Case Simulator (PCS)* is a software application used to test clinical reasoning skills by presenting a screen-based patient simulation. The software allows faculty to create their own customized case encounters and scoring rubric for assessment.

*Virtual Comment Book (VCB)* is a software application used to allow students the ability to access their incorrect answers immediately after submitting their exam and provide challenges and feedback to their exam items.

*Iowa Exam Browser (IEB)* is a test-security software application that launches prior to exam login and can disable a list of instant messaging, screen capture, web browsing, email and other potentially insecure computer applications during the exam period.

*Variable Exam Administration formats* include high-stakes large group (170+), flexible schedule (multi-day, multi-location), and OSCE-style multi-station mini-exams.

## Research and Scholarly Presentations

*Investigating Virtual Patient Simulations for Learning and Assessment of Medical Consultation Skills*, February 7-9. Presentation at the 11th Scientific Meeting of the Irish Network of Medical Educators (INMED), University College Cork, Cork, Ireland, Bruen, C., **Kreiter, C.**, Guihen, F., Arnett, R., Wade, V., Johnston, K., Pawlikowska, T.

*A 5-year Longitudinal Study of Factors Influencing Surgery as a Career Choice in Medical Students: Analysis of the First Cohort from the Start of Medical School to Matriculation*, February 10. Oral presentation at the American Council of Academic Plastic Surgeons Winter Retreat, Chicago, IL, Lorenzen, A.W., McDonald, C.E., **Barlow, P.B.**, Keith, J.

*Outcomes of Performance Based Assessments with Varied Sexual History Communication Curricula*, February 28. Presented at the Council of Resident Education in Obstetrics and Gynecology and the Association of Professors of Gynecology and Obstetrics Annual Meeting, National Harbor, MD, Shaffer, S., Gnade, C., **Kreiter, C.**, Stockdale, C.

*Outcomes of Performance Based Assessments with Varied Sexual History Communication Curricula*, March 1. Oral poster presentation at the APGO-CREOG Annual Meeting, National Harbor, MD, Shaffer, S., Gnade, C., **Kreiter, C.**

*An Interdisciplinary Approach to Developing an Education Data Warehouse*, March 22. CGEA Panel Presentation, Rochester, MN, **Barlow, P.**, Staskal, D., Asprey, D., **Ferguson, K.**, Knosp, B.

*Finding Your Strengths*, March 22. Poster presented at the annual meeting of the Central Group on Educational Affairs, Rochester, MN, **Pettit, J.E.**, MacDowell, M.

*Incorporating Mechanistic Case Diagrams to Assess Integration of Basic and Clinical Sciences in Clerkship OSCEs*, March 22. Poster presentation at CGEA, Rochester, MN, Franklin, E., **Ferguson, K.J.**, Dee, F.

*Promoting Team Science Across a CTSA Hub Institution: Content Analysis of Team Science Pilot Grant Program Applications*, April 20. Oral presentation at the Association for Clinical and Translational Science National Meeting, Washington, D.C., **Barlow, P.B.**, Swander, L.

*Integration of Surface Anatomy with Massage Therapy: Impact of Musculoskeletal Anatomy Knowledge and Student Wellness*, April 22. Poster presented at the annual meeting of the American Association of Anatomists, San Diego, CA, Hoffman, D.S., Dancing, D., **Rosenbaum, M.**

*You Don't Need an App for That! Leveraging Institutional Tools to Create a Real-Time Resident Feedback 'App'*, June 7. Poster presented at the 2018 Information Technology in Academic Medicine Conference, sponsored by the AAMC GIR, Austin, TX, **Johnsen, D.**

*Integrated Instructional of Surface Anatomy with Massage Therapy: Impact on Physical Exam Skills*, June 10. Poster presented at the annual meeting of the International Association of Medical Science Educators, Las Vegas, NV, Hoffman, D.S., Dancing, D., **Rosenbaum, M.**

*Web-Enabled Mechanistic Case Diagrams Facilitate Assessment of Medical Science Reasoning Skills in the Clinical Years*, June 10. Poster presented at the 22nd Annual Meeting of the International Association of Medical Science Educators, Las Vegas, NV, Dee, F., Haugen, T., **Kreiter, C., Lothamer, N., Ferguson, K.**

*Difficult Conversations: Realistic Preparation for Student Clinical Learning*, September 1. Poster presented at the International Conference on Communication and Healthcare, Porto, Portugal, Brenneman, A., **Rosenbaum, M.**

*An Art and Skill: Exploring Teaching Communication Skills for Medical Students*, September 2. Poster presented at the International Conference on Communication and Healthcare, Porto, Portugal, Manhica, N., **Rosenbaum, M., Barlow, P.**, White, K.

*Communication Skills Training in US Otolaryngology Residency Programs*, September 2. Poster presented at the International Conference on Communication and Healthcare, Porto, Portugal, Schopper, H., **Rosenbaum, M.**

*Analysis of Explanation and Planning Skills in Pre-Operative Conversations using EPSCALE*, September 3. Paper presented at the International Conference on Communication and Healthcare, Porto, Portugal, Schopper, H., Kapadia, M., **Rosenbaum, M.**

*Breaking Bad News: Feasibility and Benefit of a Brief Training Program for Pediatric Fellows*, September 3. Paper presented at the International Conference on Communication and Healthcare, Porto, Portugal, Robb, K., **Rosenbaum, M.**

*Clinical Teachers' Perspectives on Workplace-Based Communication Skills Teaching for Medical Students*, September 3. Paper presented at the International Conference on Communication and Healthcare, Porto, Portugal, White, K., Manhica, N., **Barlow, P., Rosenbaum, M.**

*Early Integration of Clinical Reasoning and Communication Skills Teaching in the Medical Curriculum*, September 3. Paper presented at the International Conference on Communication and Healthcare, Porto, Portugal, Shibli-Rahhal, A., Franklin, E., **Rosenbaum, M.**

*Research and Resources for Workplace Based Communication Learning*, September 3. Roundtable discussion at the International Conference on Communication and Healthcare, Porto, Portugal, **Rosenbaum, M.**, Moller, J.E., Perron, N.J., Bombeke, K.

*What They Say and What They Do: Faculty Perceptions of Communication Skills Teaching in the Clinical Setting*, September 3. Paper presented at the International Conference on Communication and Healthcare, Porto, Portugal, Manhica, N., **Rosenbaum, M.**, White, K., **Barlow, P.**

*The Impact of Medical Scribing on the Learning of Clinical Skills*, September 12. Poster presented at the Carver College of Medicine Student Research Day, Iowa City, IA, Weerasinghe, S., Skelly, K. **Rosenbaum, M.**, Daly, J.

*Resident Perceptions of Cross Specialty Interaction*, September 12. Poster presented at the Carver College of Medicine Student Research Day, Iowa City, IA, Amdahl, C., Kapadia, M., Suneja, M., **Rosenbaum, M.**

*Growing the Evaluation Tent: Teaching Program Evaluation to Healthcare Professionals*, November 1. Oral presentation at the American Evaluation Association annual meeting, Cleveland, OH, **Barlow, P.B.**

*Training Medical Students in Program Evaluation to Improve Curriculum*, November 1. Oral presentation at the American Evaluation Association (AEA) annual meeting, Cleveland, OH, **Barlow, P.B., Lancianese, D.**, Zarei, K.

## Publications

- Ferguson, K.J., Kreiter, C.D.**, Haugen, T.H., Dee, F.R. Web-Enabled Mechanistic Case Diagramming: A Novel Tool for Assessing Students' Ability to Integrate Foundational and Clinical Sciences. *Academic Medicine*, DOI:10.1097/ACM.0000000000002184, 2018.
- Kieran, K., **Rosenbaum, M.**, Jensen, N. See, Do, Teach? A Review of Contemporary Literature and Call for Action for Communication Skills Teaching in Urology. *Urology*, 114:33-40, 2018.
- Kreiter, C.**, O'Shea, M., Bruen, C., Murphy, P., Pawlikowska, T. A Meta-Analytic Perspective on the Valid Use of Subjective Human Judgment to Make Medical School Admission Decisions. *Medical Education Online*, 23:1, DOI: 10.1080/10872981.2018.1522225, 2018.
- Krois, N.R., Kossioni, A.E., **Barlow, P.B.**, Straub-Morarend, C.L., Marchini, L. Preliminary Validation of an Instrument to Assess Students' Perceptions of Clinical Learning Environments at U.S. Dental Schools. *Journal of Dental Education*, DOI:10.21815/JDE.018.064, 2018.
- Norman, J., Moore, A., Mattfeldt-Beman, M., Kelly, P., **Barlow, P.B.** Power of Produce: Farmers' Market Incentive Program Targeting Eating Behaviors of Children. *Journal of Extension*, 56(2), 2018.
- Rucker, R., **Barlow, P.B.**, Hartshorn, J., Kaufman, L., Smith, B., Kossioni, A., Marchini, L. Development and preliminary validation of an ageism scale for dental students. *Special Care in Dentistry*, DOI: 10.1111/scd.12259, January 4, 2018.
- Rucker, R., **Barlow, P.B.**, Hartshorn, J., Kaufman, L., Smith, B., Kossioni, A., Marchini, L. Dual Institution Validation of an Ageism Scale for Dental Students. *Special Care Dentistry*, OnLine Earlier:1-6. DOI:10.1111/scd.12341, 2018.
- Sahker, E., **Lancianese, D.A.**, Jones, D., Arndt, S. Screening, Brief Intervention, and Referral to Treatment Demonstrates Effectiveness in Reducing Drinking in a Midwest American Service Sample. *International Journal of Mental Health and Addiction*, DOI:10.1007/s11469-018-9953-1, 2018.
- Shaffer, S., Gnade, C., **Kreiter, C.**, Stockdale, C. Outcomes of Performance-Based Assessments with Varied Sexual History Communication Curricula. *Obstetrics and Gynecology*, 132(4):51S, 2018.
- Stamy, C.D., Schwartz, C.C., Phillips, D.A., Ajarapu, A.S., **Ferguson, K.J.**, Schwinn, D.A. Time-Variable Medical Education Innovation in Context. *Advances in Medical Education and Practice*, In Press 2018.
- Stockdale, C.K., **Rosenbaum, M.**, Kippes, J., Elson, M. Let's Talk about Sex History: Impact of a Communication Curriculum on Medical Student Performance and Perceived Competency. *Proceedings of Obstetrics and Gynecology*, 8(3):1-10, 2018.

Taylor, L.K., Thomas, G.W., Karam, M.D., **Kreiter, C.D.**, Anderson, D.D. Developing an Objective Assessment of Surgical Performance from Operating Room Video and Surgical Imagery. *IISE Transactions on Healthcare Systems Engineering*, 8(2):110-6, 2018.

Zaidi, N., **Kreiter, C.**, Castaneda, P., Schiller, J., Yang, J., Grum, C., Hammoud, M., Gruppen, L., Santen, S. Generalizability of Competency Assessment Scores Across and Within Clerkships: How Students, Assessors, and Clerkships Matter. *Academic Medicine*, 93(8):1212-7, 2018.

### **Book Chapter**

**Pettit, J.** Instructional Design Models and Medical Education. In: *Effective Teaching and Learning: Perspectives, Strategies and Implementation*, Abend, M. eds. Nova Science Publishers, Inc, 2018.

### **Technical Reports, Manuals and Other Publications**

**Barlow, P.B.**, Henderson, K. Clinical Research Unit User Feedback Evaluation. The University of Iowa Institution for Clinical and Translational Science report, 2018.

**Barlow, P.B., Lancianese, D., Lenocho, S.** The University of Iowa Hospitals & Clinics and Des Moines Clerkship Sites: A Comprehensive Comparison of Student Outcomes. The University of Iowa Carver College of Medicine report, 2018.

**Barlow, P.B., Lancianese, D., Lenocho, S.** The University of Iowa Hospitals & Clinics and Des Moines Clerkship Sites: A Comprehensive Comparison of Student Outcomes for the Community Based Primary Care Clerkship. The University of Iowa Carver College of Medicine report, 2018.

## Service to the College, University and Academia

### Committee Membership

Academic Technologies Advisory Committee (ATAC): Patrick Barlow

Admissions Committee, Interview Subcommittee: Kristi Ferguson

Clinical Experiences Committee: Jeff Pettit (ex-officio)

Clinical and Professional Skills (CAPS) Committee: Marcy Rosenbaum

Communication Thread Director: Marcy Rosenbaum

Collegiate Leadership Committee: Kristi Ferguson, Jeff Pettit

Computer Testing/Proctoring/Space Planning Group, Campus Committee: Daniel Johnsen

Council on Teaching Charter Committee: Jeff Pettit

CultureVision Steering Committee: Patrick Barlow

#### Family Medicine

Departmental Consulting Group: Clare Kreiter, Marcy Rosenbaum

Operations Council: Jeff Pettit

TeamSTEPPS: Jeff Pettit

Graduate Medical Education (GME) Council: Jeff Pettit

ICON Collegiate Administrators Group: Stephanie Burnett, Dan Johnsen, Nathan Lothamer

ICTS Management Committee: Patrick Barlow

LCME Dashboard Project Working Group: Patrick Barlow, Donna Lancianese

Mechanisms of Health and Disease Curriculum Group: Susan Lench

Medical Arts and Sciences Committee: Patrick Barlow (ex-officio), Kristi Ferguson, Donna Lancianese

Medical Education Council: Kristi Ferguson, Susan Lench, Jeff Pettit

Assessment Committee: Patrick Barlow (Co-Chair), Kristi Ferguson (Co-Chair), Clare Kreiter, Donna Lancianese, Susan Lench

Medical Education Monitoring and Evaluation (MEME) Team: Patrick Barlow (Faculty Director), Susan Lench, Donna Lancianese

Medicine and Society Strand Committee: Jeff Pettit

#### Master in Medical Education

Admissions Committee: Patrick Barlow, Kristi Ferguson, Clarence Kreiter, Jeff Pettit, Marcy Rosenbaum

Portfolio Committee: Patrick Barlow, Kristi Ferguson, Clarence Kreiter, Jeff Pettit, Marcy Rosenbaum

Provost's Arts Advancement across the University Initiative  
Arts and Medicine Subcommittee: Marcy Rosenbaum

Simulation Center Advisory Committee: Kristi Ferguson, Jeff Pettit

Student Caduceus Liaison Committees: Patrick Barlow

Support Community for Instructional Technology (SCIT): Dan Johnsen

Teaching Distinction Track Advisory Committee: Kristi Ferguson, Jeff Pettit

Department of Anthropology, Affiliated Faculty Member: Marcy Rosenbaum

Department of Neurosurgery, Adjunct Faculty Member: Jeff Pettit

Program in Biomedical Ethics and Medical Humanities, Affiliated Faculty Member: Marcy Rosenbaum

### Teaching in College of Medicine and Other Courses

**For teaching related to the Master and Certificate programs in Medical Education, see the section on Teaching Skills Development and Faculty Development.**

MED:8010 Introduction to Medical Education at Iowa

*Overview of Computer-Based Testing*, Daniel Johnsen

MED:8121 Clinical and Professional Skills I

*Introduction to the Medical Interview* (lecture), Marcy Rosenbaum

Small Group, Substitute, and Co-Facilitator, Marcy Rosenbaum

MED:8131 Clinical and Professional Skills II

*Picking Up and Responding to Patient's Emotions* (lecture), Marcy Rosenbaum

*The Physical Examination as Part of the Medical Interview* (lecture), Marcy Rosenbaum with William Iverson

MED:8221 Clinical and Professional Skills III

*Orientation for Patient Based Clinical Reasoning*, Daniel Johnsen

MED:8222 Medicine and Society III

Small Group Facilitator, Kristi Ferguson

MED:8320 Transition to Clerkships

*Difficult Conversations with Patients and Families* (lecture), Marcy Rosenbaum with Tony Brennemann (Co-Coordinator and Small Group Facilitators)

MED:8403 Teaching Skills for Medical Students, Jeff Pettit and Kristi Ferguson (Co-Course Directors)

MED:8404 Advanced Teaching Skills for Medical Students, Jeff Pettit and Kristi Ferguson (Co-Course Directors)



MED:8405 Leadership for Future Healthcare Professionals, Jeff Pettit (Course Director)

CSD:6245 Pediatric Audiology  
*Delivering Difficult News to Parents* (lecture), Marcy Rosenbaum

MPB:8115 Human Physiology for Dental Students  
*Orientation for Computer Based Testing* (presentation), Daniel Johnsen

PTRS:6122 Psychosocial Aspects of Patient Care  
*Delivering Bad News* (lecture), Marcy Rosenbaum

Clinical Methods Sessions:

Marcy Rosenbaum (Small Group Facilitator):

IM:8301 Inpatient Medicine Clerkship, Explanation and Planning  
IM:8302 Outpatient Medicine, Interview Challenges

*Facilitator Training*, August 6, 8 and 9. PCS training for CAPS I, Marcy Rosenbaum.

*Giving and Receiving Feedback*, August 9. Presentation for new medical and PA students, Jeff Pettit.

*Strengths Finder*, August 9. Presentation for new medical and PA students, Jeff Pettit.

*M4 Facilitator Training for Sexual History Sessions*, M4 facilitators for CAPS III, Marcy Rosenbaum.

*Carver College of Medicine*, October 12. Presented session for visiting group of students from Cornell College, Jeff Pettit.

In addition to advising students in the Master program, some OCRME faculty also supervise summer research projects or mentor students in one of the distinction tracks.

Supervised Student Research

Patrick Barlow: Nicole Krois, Ryan Rucker, Kasra Zarei

Marcy Rosenbaum: Nicoll Martins-Manhica, Sanjeeva Weerasinghe

Thesis Committee

Patrick Barlow: Michelle Krupp EdD

Dissertation Committee

Patrick Barlow: Zhiva Zuo-PhD

Clare Kreiter: Salvador Rojas-Murillo, PhD

## Professional Organizations

### Membership and Leadership

Accreditation Council for Graduate Medical Education (ACGME)

Council of Public Members: Jeff Pettit (Chair Elect)

Medically Underserved Areas and/or Populations Committee: Jeff Pettit

Transitional Year Milestones 2.0 Committee: Jeff Pettit

Transition Year Residency Review Committee: Jeff Pettit

American Academy for Communication and Healthcare: Marcy Rosenbaum

American Educational Research Association (AERA): Kristi Ferguson, Susan Lench

AERA Division I Affirmative Action Committee: Clarence Kreiter

American Evaluation Association (AEA): Patrick Barlow, Donna Lancianese

Graduate Student and New Evaluator Topical Interest Group (GSNE TIG): Patrick Barlow

Health Professions Educational Evaluation and Research (HPEER TIG): Patrick Barlow (Co-Organizer and Co-Founder)

Higher Education Assessment TIG: Patrick Barlow

Multi-Paper Presentation Session, 2018 AEA Conference: Patrick Barlow (Chair)

Translational Science Evaluation TIG: Patrick Barlow

Association for Clinical and Translational Science: Patrick Barlow

Program Evaluation Special Interest Group (SIG): Patrick Barlow (Co-Chair)

Association for Medical Education in Europe: Kristi Ferguson

Association of American Medical Colleges (AAMC): Kristi Ferguson, Clarence Kreiter,

Susan Lench, Marcy Rosenbaum

AAMC Central Group on Educational Affairs: Patrick Barlow, Kristi Ferguson, Jeff Pettit,

Marcy Rosenbaum

Educational Leadership Special Interest Group: Jeff Pettit (Convener)

International Association for Communication in Healthcare

Executive Committee: Marcy Rosenbaum

Summer Event Planning Committee: Marcy Rosenbaum

tEACH Teaching Committee: Marcy Rosenbaum (Chair)

International Conference on Communication in Healthcare: Marcy Rosenbaum (President Elect)

Pairing with Colleagues Program: Marcy Rosenbaum (Chair)

Planning Committee for 2018: Marcy Rosenbaum (Chair)

Scientific Committee: Marcy Rosenbaum

National Institute of Health, National Center for Advancing Translational Sciences

CTSA Common Metrics Informatics Working Group: Patrick Barlow

CTSA Common Metrics Initiative Workforce Development Working Group: Patrick Barlow

CTSA Program Evaluator's Group: Patrick Barlow

Institutional Readiness for Translational Sciences Working Group, Methods & Processes  
Domain Task Force: Patrick Barlow

Society of Directors of Research in Medical Education: Kristi Ferguson

Society of Teachers of Family Medicine: Marcy Rosenbaum

**Reviewers for:**

*Academic Medicine*: Kristi Ferguson, Clarence Kreiter, Marcy Rosenbaum

*Advances in Health Sciences Education*: Kristi Ferguson, Clarence Kreiter (Associate Editor)

Special Issue on Alternative Measures for Admissions: Clarence Kreiter (Editor)

*Ambulatory Pediatrics*: Clarence Kreiter

*Anatomical Sciences Education*: Kristi Ferguson

*Biomed Central: Medical Education*: Patrick Barlow

*BMC Medical Education*: Kristi Ferguson, Clarence Kreiter, Marcy Rosenbaum

*Doody's Review Service*: Jeff Pettit

*Education for Health*: Marcy Rosenbaum

*Family Medicine*: Marcy Rosenbaum

*Journal of Graduate Medical Education*: Patrick Barlow

*Journal of Postgraduate Medicine*: Marcy Rosenbaum

*Medical Education*: Kristi Ferguson

*Medical Education Online*: Clarence Kreiter, Marcy Rosenbaum

*MedEdPORTAL*: Kristi Ferguson, Jeff Pettit, Marcy Rosenbaum

*Patient Education and Counseling*: Marcy Rosenbaum

*Pediatrics*: Marcy Rosenbaum

*Substance Abuse Treatment, Prevention, and Policy*: Donna Lancianese

*Teaching and Learning in Medicine*: Kristi Ferguson, Clarence Kreiter, Marcy Rosenbaum

*The Journal of the American Academy of Physician Assistants*: Clarence Kreiter

AEA Conference submissions: Patrick Barlow

AERA Conference Annual Meeting Proposals: Clarence Kreiter

American Academy for Communication in Healthcare Proposals: Marcy Rosenbaum

AAMC Annual Meeting Research in Medical Education papers: Clarence Kreiter

AAMC Annual Meeting Research in Medical Education sessions: Clarence Kreiter, Susan Lench

AAMC Central Group on Education Affairs Annual Meeting Proposals: Susan Lench, Jeff Pettit

AAMC Central Group on Education Affairs Annual Meeting Posters: Kristi Ferguson

International Conference on Communication in Healthcare Abstracts: Marcy Rosenbaum

National Council on Measurement in Education: Clarence Kreiter