

Directions to the Human Performance and Clinical Outcomes Laboratory

21D Eckstein Medical Research Building (EMRB) | (319)353-0431

See next page for detailed instruction



Department of Physical Therapy & Rehabilitation Science
1-252 Medical Education Building, Iowa City, IA 52242-1190
Tel 319-335-9791 | Fax 319-335-9707
www.medicine.uiowa.edu/pt

Human Performance and Clinical Outcomes Lab
21D Eckstein Medical Research Building Iowa City, IA 52242-1190
Tel 319-353-0431 | Fax 319-335-9707
WilkenLab@healthcare.uiowa.edu

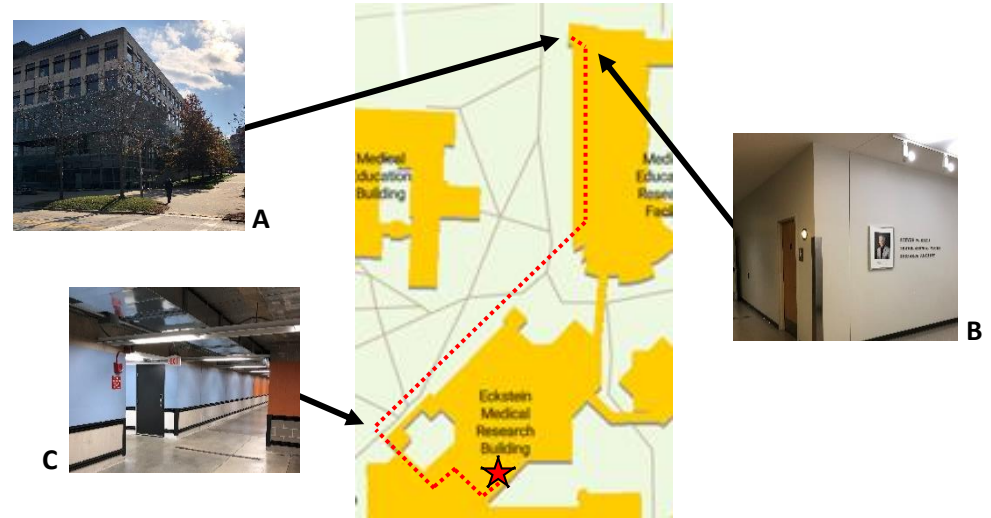
Directions to Human Performance & Clinical Outcomes Lab

Parking available in the Newton Road Ramp: 426 Newton Rd, Iowa City, IA 52246

Arriving from the Newton Road Parking Ramp

Entrance 1: MERF

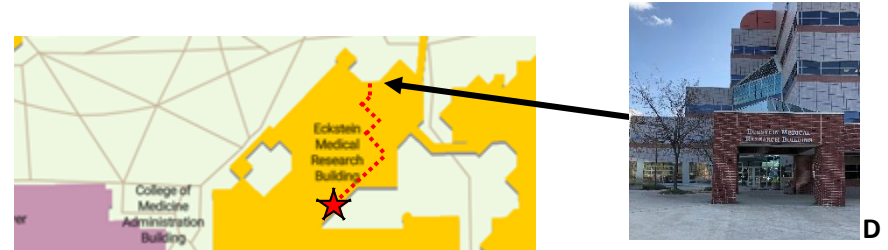
- Cross Newton Road and enter the Medical Education Research Facility (picture A)
- Proceed through the Lobby past the stairs on your right and the sitting area on your left
- Take a right turn down the Steven W. Dezil Translational Vision Research Facility hallway (picture B)
- Follow the hallway to the right and pass through the grey double doors
- Follow the green hallway and turn left into the blue hallway and proceed through the grey double doors (picture C)
- Turn left as the hallway ends
- Make the next right turn
- Make the next left turn
- The lab is on your left: **21D EMRB**



Arriving from the University of Iowa Hospitals and Clinics via Boyd Tower

Entrance 2: EMRB

- Enter the Eckstein Medical Research Building (picture D)
- Take the elevator to the right to the basement
- When exiting the elevator turn right, and then left. (do not pass through the red door to your left)
- At the end of the hallway turn right
- Make the next possible left
- At the end of the hallway turn right
- The lab is on your right: **21D EMRB**



Arriving from the east side of campus via Riverside Drive Pedestrian Walkway

Entrance 3: Med Labs

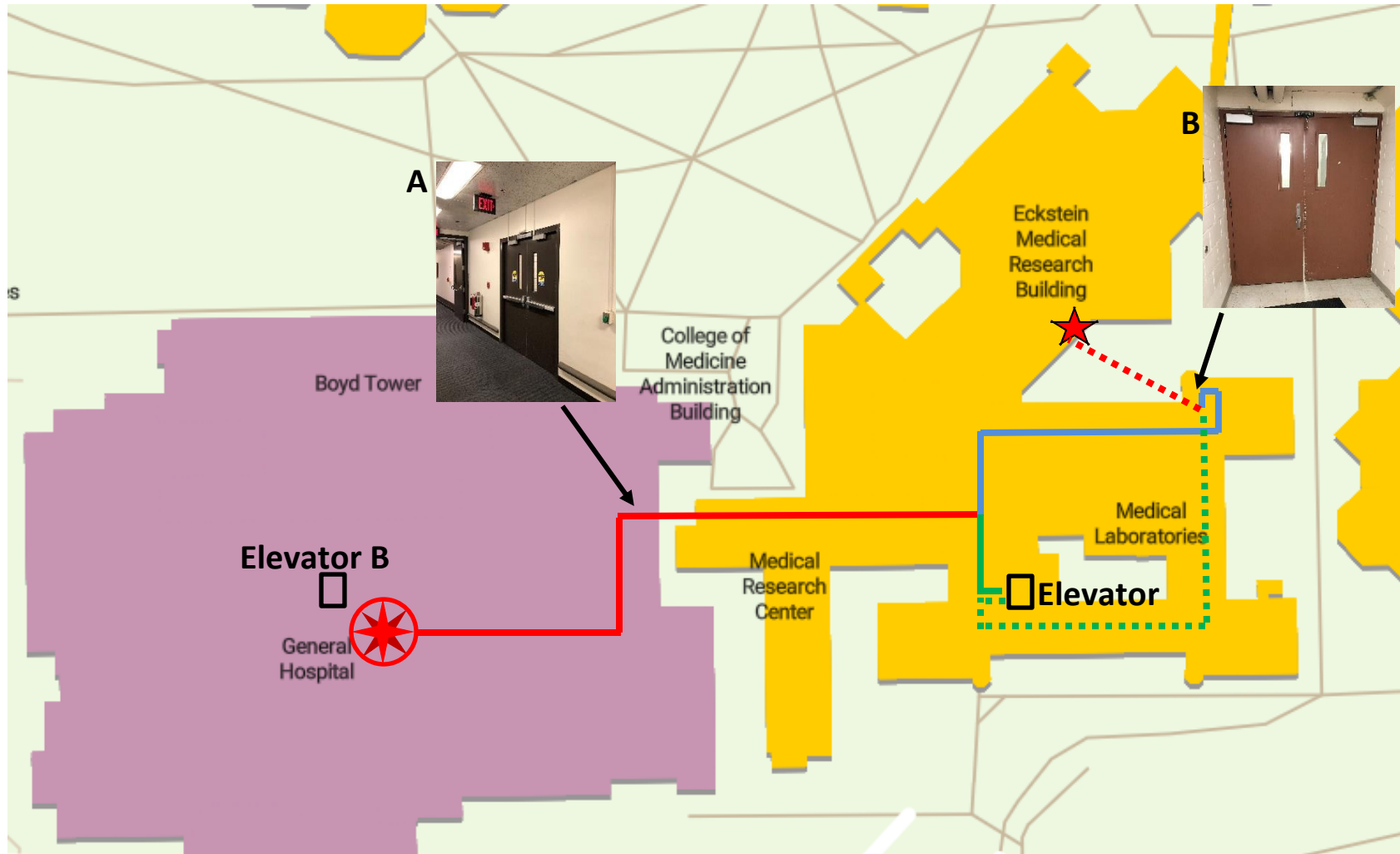
- Enter the far east entrance of the Medical Laboratories building (picture E)
- Continue straight through the building until you reach the far end
- Take a left, and continue through the red double doors (picture F)
- Make the next possible right turn
- The lab is on your left: **21D EMRB**



Directions to the Human Performance and Clinical Outcomes Laboratory

21D Eckstein Medical Research Building (EMRB) | (319)353-0431

See next page for detailed instruction



Department of Physical Therapy & Rehabilitation Science
1-252 Medical Education Building, Iowa City, IA 52242-1190
Tel 319-335-9791 | Fax 319-335-9707
www.medicine.uiowa.edu/pt

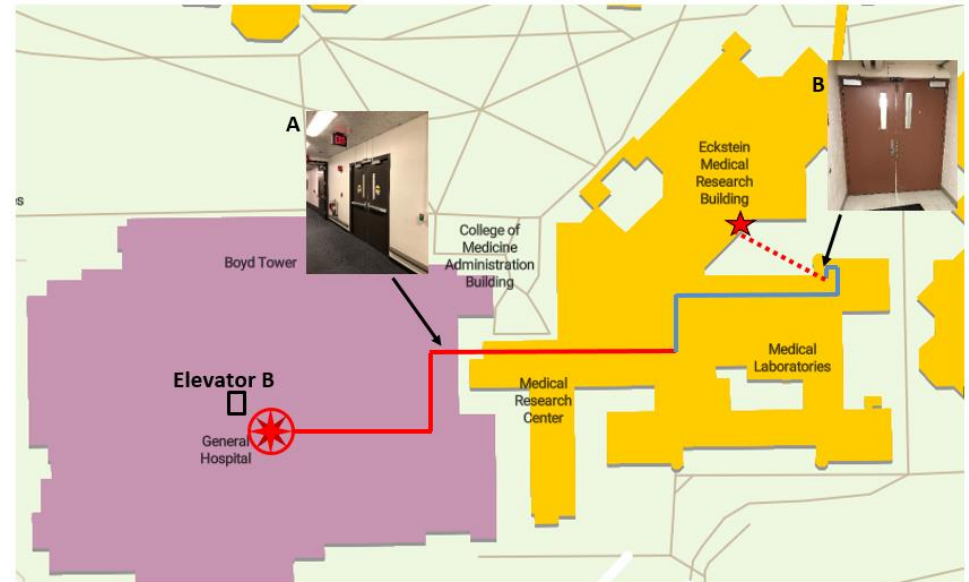
Human Performance and Clinical Outcomes Lab
21D Eckstein Medical Research Building Iowa City, IA 52242-1190
Tel 319-353-0431 | Fax 319-335-9707
WilkenLab@healthcare.uiowa.edu

Directions to Human Performance & Clinical Outcomes Lab

Arriving from the UIHC, General Hospital

Using Stairs:

- Navigate to elevator B, in the general hospital
- Proceed down the east hallway, following the compass on the floor
- At the end of the hallway turn left
- Turn right, and proceed through the brown double doors (picture A)
- Continue straight through the hallway
- Turn left at the end of the hallway
- Make the next possible right turn
- Turn left at the end of the hallway
- Take the stairs down to the lowest level
- Proceed through the red double doors to the right (picture B)
- Turn right at the end of the tunnel
- The lab is on your left: **21D EMRB**



Using Elevator:

- Navigate to elevator B, in the general hospital
- Proceed down the east hallway, following the compass on the floor
- At the end of the hallway turn left
- Turn right, and proceed through the brown double doors (picture A)
- Continue straight through the hallway
- Turn right at the end of the hallway
- Take the elevator on the left down one floor to the basement
- Turn left out of the elevator
- Immediately turn left, and continue down the hallway
- Turn left at the end of the hallway
- Proceed through the red double doors to the left (picture B)
- Turn right at the end of the tunnel
- The lab is on your left: **21D EMRB**

